



COVE Meeting

CITIZENS' CONSTRUCTION OVERSIGHT AND VALUE ENGINEERING

September 19, 2019

COVE Meeting Agenda

Thursday, September 19, 2019 @ 8:00 a.m.
Facilities Services - Building 200
6501 Magic Way, Orlando, Florida 32809

I. Call to Order and Approval of June COVE Meeting Minutes -
Ksenia Merck, Chairman ----- Pg. 1-3

- Chairman Comments

II. Departmental Reports

- Finance Report - Dale Kelly/Judith Padres ----- Pg. 4-12
- Project Status Report - Jeff Hart/Mark O'Connor ----- Pg. 13-32
- W/MBE Update - Joycelyn Henson ----- Pg. 33-35
- Change Order Update - Ed Ames ----- Pg. 36-68
- Capital Renewal Update - Rory Salimbene ----- Pg. 69-77

III. Presentations/Reports

- HVAC/Chiller Update - Rory Salimbene
- Lessons Learned - Basem Ghneim
- Community Update - Lauren Roth

IV. Discussion and Adjournment

- The next COVE Meeting will held on October 17, 2019.

REVISED COVE MEETING MINUTES



The Construction Oversight and Value Engineering Committee (COVE) monthly meeting convened on Thursday, June 20, 2019 at 8:05 a.m., at Facilities Services, 6501 Magic Way, Bldg. 200, Orlando, Florida 32809.

COVE Members in Attendance: Ksenia Merck, Pat Knipe, James Knapp, Mario Cuello, and Douglas Kelly.

OCPS Staff in Attendance: Jeff Hart, Mark O'Connor, Ed Ames, Rory Salimbene, Judith Padres, Mari Espinal, Craig Jackson, Lauren Roth, Basem Ghneim, Mike Winter, Linda Lindsey, Alva Johnson, Toni Greene, Sandra Roopwah, Mariangeles Garcia and Malika Joseph (as scribe).

Call to Order:

A quorum was established and Chairman Ksenia Merck called the meeting to order at 8:05 a.m.

Chairman Comments

Ksenia Merck indicated that she will not be available on Thursday, August 8th for the school bus tour and asked the Committee to consider moving it to Friday, August 9th. The committee unanimously approved the decision to move the bus tour to August 9, 2019.

Approval of Minutes

The minutes from May 16, 2019 were presented and approved unanimously by the committee.

Departmental Reports

➤ Project Status

Mark O'Connor reported that there were budget adjustments for four (4) projects, including (1) \$1.2 million increase for Site 83-E-SE-3 related to the construction of the retention pond and additional safety enhancements; (2) \$2.6 million increase for Magnolia Behavioral Center due to a design scope change and additional safety enhancements; (3) \$1.6 million increase for Winegard ES due to market conditions; and (4) \$1 million increase for Pinar ES due to market conditions.

Jeff Hart reported that there are currently 16 projects under construction amounting to approximately \$380 million. He briefed the Committee on projects under construction, substantial completions, anticipated future milestones, projects in closeout and those in the design phase.

Douglas Kelly asked for an explanation of the modifications to the fire alarm system for Pershing K8. Jeff Hart explained that in 2015, there was a change in the building code that requires the implementation of voice evacuation systems within education facilities that provide capacity for over 100 students; however, the engineer of record failed to account for this requirement; and we are therefore required to incorporate the change.

Pat Knipe inquired about the cost of the safety enhancement program per school. Jeff Hart stated that from a budget standpoint the program will cost around \$300,000 per elementary school, between \$500,000 to \$600,000 per middle school and around \$1.2 million per high school. The anticipated potential total cost to the District would be approximately \$90+ million.

Pat Knipe asked about the total cost for one-to-one devices. Judith Padres explained that it is approximately \$250 million district wide.

➤ **Change Order Report – Ed Ames**

There are no significant change orders or amendments to report for the month of March.

Mario Cuello questioned item #4 on page 15 regarding Deerwood ES. Jeff Hart explained that at designated schools with ESE “clusters”, or groupings of special needs students, the youth lot playgrounds are being modified to ensure the equipment is accessible and inclusive for all students. Mario Cuello questioned the estimated construction of amount of \$253,000. Jeff Hart questioned the amount as well and will verify the amount and adjust accordingly.

Pat Knipe questioned item #6 on page 17 regarding Corner Lake MS. Jeff Hart explained that during the walkthrough of the buildings included in Phase 1 of the construction, there were areas that needed additional finishes that were not included in the GMP.

Douglas Kelly questioned item #7 on page 18 referencing the amount for relocation of Century Link utility cable for Castleview ES. Jeff Hart explained that based on community input and the agreement between the School Board Member and County Commissioner, an additional access lane was incorporated into the project that encroached upon the right-of-way where the existing utility was located, thus requiring the relocation of the utility cables from under the new access road location.

➤ **Capital Renewal Update**

Rory Salimbene reported there are 53 active projects currently in progress for improvements at 44 different sites. The total estimated cost for these projects is approximately \$205 million and the total construction cost is approximately \$157 million. There are 12 projects in planning, 12 in design, and 29 projects in

construction.

Presentation

There were no presentations.

Action Item(s)

Mario Cuello requested a presentation on HVAC/chiller improvements in September.

Adjournment

- There is not a scheduled meeting for the month of July.
- A school bus tour to Pershing K8 School will be conducted on August 9, 2019.
- The next meeting will be held on Thursday, September 19, 2019, at 8 a.m., at Facilities Services, 6501 Magic Way, Bldg. 200, Orlando, Florida 32809.
- As there were no further business, the meeting was adjourned at 8:50 a.m.

Minutes Authenticated by:

Ksenia Merck
Chairman COVE Committee

Date of approval

Laura L. Kelly
Legal Services Facilities

Date of approval

Sales Tax Referendum Projects and Expenditures/Commitments History to Date
September 7th, 2019

Prty	School Name	Architect	Contractor	Fiscal Years 2003-2019 Expenditures	FY2020 Current Budget	20 Pre-Enc	20 Enc	20 Exp	Balance	Project Status
1	Meadowbrook Middle	Schenkel Shultz	H.C. Beck	\$ 26,049,489	\$ -	\$ -	\$ -	\$ -	\$ -	Complete
2	Liberty Middle	Hunton Brady Architects	Ajax Corporation	\$ 17,662,038	\$ -	\$ -	\$ -	\$ -	\$ -	Complete
3	McCoy Elementary	Schenkel Shultz	Turner Construction	\$ 14,533,402	\$ -	\$ -	\$ -	\$ -	\$ -	Complete
4	Jackson Middle	Rhodes and Brito Architects	Centex Rooney	\$ 20,067,753	\$ -	\$ -	\$ -	\$ -	\$ -	Complete
5	Windy Ridge K-8	BRPH Architects	Wharton Smith	\$ 26,815,040	\$ -	\$ -	\$ -	\$ -	\$ -	Complete
6	Colonial 9th Grade Center	Starmer Ranaldi	Skanska/JCB	\$ 25,576,872	\$ -	\$ -	\$ -	\$ -	\$ -	Complete
7	Ridgewood Park Elementary	Vitetta Group	Barton Malow	\$ 17,592,971	\$ -	\$ -	\$ -	\$ -	\$ -	Complete
8	Tildenville Elementary	Hanson Professional Svs	Biltmore Construction	\$ 12,034,843	\$ -	\$ -	\$ -	\$ -	\$ -	Complete
9	Bonneville Elementary	Stottler Stagg	Welbro Bldg Corp.	\$ 14,177,594	\$ -	\$ -	\$ -	\$ -	\$ -	Complete
10	Bay Meadows Elementary	Starmer Ranaldi	Wharton Smith	\$ 16,276,478	\$ -	\$ -	\$ -	\$ -	\$ -	Complete
11	Cheney Elementary	Reynolds, Smith & Hills	Williams Company	\$ 14,436,372	\$ -	\$ -	\$ -	\$ -	\$ -	Complete
12	Catalina Elementary	Schenkel Shultz	Walker & Company	\$ 16,627,751	\$ -	\$ -	\$ -	\$ -	\$ -	Complete
13	Sadler Elementary	C.T Hsu	Morganti Group	\$ 17,127,955	\$ -	\$ -	\$ -	\$ -	\$ -	Complete
14	Union Park Middle	C.T Hsu	McCree	\$ 3,882,638	\$ -	\$ -	\$ -	\$ -	\$ -	Complete
15	Apopka 9th GC			\$ -	\$ -	\$ -	\$ -	\$ -	\$ -	Complete/Incl as part of HS
16	Apopka High	Schenkel Shultz	Skanska/JCB	\$ 80,625	\$ -	\$ -	\$ -	\$ -	\$ -	Complete
17	Windermere Elementary	Harvard Jolly	McCree	\$ 15,267,318	\$ -	\$ -	\$ -	\$ -	\$ -	Complete
18	Orlo Vista Elementary	Reynolds, Smith & Hills	Williams Construction	\$ 10,853,196	\$ -	\$ -	\$ -	\$ -	\$ -	Complete
19	Lockhart Middle	Reynolds, Smith & Hills	Barton Malow	\$ 21,698,980	\$ -	\$ -	\$ -	\$ -	\$ -	Complete
20	Conway Elementary	BRPH Architects	Williams Construction	\$ 15,540,301	\$ -	\$ -	\$ -	\$ -	\$ -	Complete
21	Robinswood Middle	Rhodes and Brito Architects	Hunt Gomez	\$ 25,225,527	\$ -	\$ -	\$ -	\$ -	\$ -	Complete
22	Lee Middle	C.T Hsu	Clark Construction	\$ 26,790,976	\$ -	\$ -	\$ -	\$ -	\$ -	Complete
23	Lakemont Elementary	C.T Hsu	Wharton Smith	\$ 18,086,426	\$ -	\$ -	\$ -	\$ -	\$ -	Complete
24	West Orange HS			\$ -	\$ -	\$ -	\$ -	\$ -	\$ -	Compl. Refunded 06 COPS
25	Shenandoah Elementary	Rhodes and Brito Architects	Ruby Builders	\$ 14,120,543	\$ -	\$ -	\$ -	\$ -	\$ -	Complete
26	Killarney Elementary	Hunton Brady Architects	Wharton Smith	\$ 13,241,138	\$ -	\$ -	\$ -	\$ -	\$ -	Complete
27	Metro West Elementary	Starmer Ranaldi	Morganti Group	\$ 18,651,509	\$ -	\$ -	\$ -	\$ -	\$ -	Complete
28	Conway Middle	Vitetta Group	Walker & Company	\$ 24,529,005	\$ -	\$ -	\$ -	\$ -	\$ -	Complete
29	Maitland Middle	Rhodes and Brito Architects	Welbro Bldg Corp.	\$ 24,078,829	\$ -	\$ -	\$ -	\$ -	\$ -	Complete
30	Palm Lake Elementary	Starmer Ranaldi	Morganti Group	\$ 16,680,694	\$ -	\$ -	\$ -	\$ -	\$ -	Complete
31	Apopka Middle	BRPH Architects	Williams Company	\$ 30,888,502	\$ -	\$ -	\$ -	\$ -	\$ -	Complete
32	Columbia Elementary	Schenkel Shultz	Skanska/JCB	\$ 18,015,384	\$ -	\$ -	\$ -	\$ -	\$ -	Complete
33	Edgewater High	C.T Hsu	WG Mills	\$ 5,945,259	\$ -	\$ -	\$ -	\$ -	\$ -	Complete
34	Discovery Middle	Vitetta Group	McCree	\$ 4,174,752	\$ -	\$ -	\$ -	\$ -	\$ -	Complete
35	Winter Park 9th GC	DLR Group	Skanska/JCB	\$ 26,419,994	\$ -	\$ -	\$ -	\$ -	\$ -	Complete
36	University High	Reynolds, Smith & Hills	Hunt Gomez	\$ 37,722,232	\$ -	\$ -	\$ -	\$ -	\$ -	Complete
37	Walker Middle	Rhodes and Brito Architects	Walker & Company	\$ 3,029,630	\$ -	\$ -	\$ -	\$ -	\$ -	Complete
38	Lake Sybelia Elementary	Vitetta Group	Williams Company	\$ 10,851,745	\$ -	\$ -	\$ -	\$ -	\$ -	Complete
39	Piedmont Lake Middle	Vitetta Group	Williams Company	\$ 4,079,195	\$ -	\$ -	\$ -	\$ -	\$ -	Complete
40	Dr. Phillips 9th GC			\$ -	\$ -	\$ -	\$ -	\$ -	\$ -	Incl as part of HS
41	Rosemont ES	Rhodes and Brito Architects	Wharton Smith	\$ 6,837,233	\$ -	\$ -	\$ -	\$ -	\$ -	Complete
42	Azalea Park ES	Song and Associates	Welbro Bldg Corp.	\$ 14,572,096	\$ -	\$ -	\$ -	\$ -	\$ -	Complete
43	Hunters Creek ES	BRPH Architects	PPI	\$ 3,313,586	\$ -	\$ -	\$ -	\$ -	\$ -	Complete
44	Hunters Creek MS	Vitetta Group	Williams Company	\$ 3,400,546	\$ -	\$ -	\$ -	\$ -	\$ -	Complete
45	Waterbridge ES	Stottler Stagg	Walker & Company	\$ 15,684,055	\$ -	\$ -	\$ -	\$ -	\$ -	Complete

Sales Tax Referendum Projects and Expenditures/Commitments History to Date
September 7th, 2019

Prty	School Name	Architect	Contractor	Fiscal Years 2003-2019 Expenditures	FY2020 Current Budget	20 Pre-Enc	20 Enc	20 Exp	Balance	Project Status
46	Chickasaw ES	Hunton Brady Architects	Walker & Company	\$ 12,246,375	\$ -	\$ -	\$ -	\$ -	\$ -	Complete
47	Orange Center ES	BRPH Architects	McCree	\$ 10,661,217	\$ -	\$ -	\$ -	\$ -	\$ -	Complete
48	Riverdale ES	Reynolds, Smith & Hills	Hodges Brothers	\$ 893,641	\$ -	\$ -	\$ -	\$ -	\$ -	Complete
49	Gotha MS	Vitetta Group	Williams Company	\$ 4,147,754	\$ -	\$ -	\$ -	\$ -	\$ -	Complete
50	Westridge MS	Zyscovich Architects	Clancy & Theys	\$ 20,458,442	\$ 43,556	\$ -	\$ 4,000	\$ -	\$ 39,556	Complete
51	Southwood ES	Rhodes and Brito Architects	Wharton Smith	\$ 1,381,936	\$ -	\$ -	\$ -	\$ -	\$ -	Complete
52	Lakeville ES	Reynolds, Smith & Hills	Wharton Smith	\$ 488,647	\$ -	\$ -	\$ -	\$ -	\$ -	Complete
53	Pinewood ES	Reynolds, Smith & Hills	R.L. Burns	\$ 368,128	\$ -	\$ -	\$ -	\$ -	\$ -	Complete
54	Zellwood ES	DLR Group	Balfour Beatty	\$ 16,209,000	\$ -	\$ -	\$ -	\$ -	\$ -	Complete
55	Memorial Middle	Schenkel Shultz	Balfour Beatty	\$ 2,660	\$ -	\$ -	\$ -	\$ -	\$ -	Complete
56	Cypress Springs ES	Stottler Stagg	Walker & Company	\$ 16,744,000	\$ -	\$ -	\$ -	\$ -	\$ -	Complete
57	Princeton ES	Rhodes and Brito Architects	Doster Constr	\$ 17,755,369	\$ -	\$ -	\$ -	\$ -	\$ -	Complete
58	Dr. Phillips HS	C.T Hsu	J.A. Cummings	\$ 65,565,136	\$ 1,004,864	\$ -	\$ 48,187	\$ -	\$ 956,677	Complete
59	Rock Springs ES	BRPH Architects	Turner Construction	\$ 15,721,496	\$ -	\$ -	\$ -	\$ -	\$ -	Complete
60	Aloma ES	Rhodes and Brito Architects	Doster Constr	\$ 11,641,264	\$ -	\$ -	\$ -	\$ -	\$ -	Complete
61	Spring Lake ES	BRPH Architects	Charles Perry	\$ 14,051,417	\$ -	\$ -	\$ -	\$ -	\$ -	Complete
62	Arbor Ridge K8	Schenkel Shultz	Mills Gilbaine	\$ 4,476,568	\$ -	\$ -	\$ -	\$ -	\$ -	Split Funded 2010 QSCB & Sales Tax
63	Little River ES	C.T Hsu	J.A. Cummings	\$ 13,148,115	\$ 2,403	\$ -	\$ 2,403	\$ -	\$ -	Complete
64	Eccleston ES	Rhodes and Brito Architects	Williams Company	\$ 3,800,094	\$ -	\$ -	\$ -	\$ -	\$ -	Split Funded 2010 QSCB & Sales Tax
65	Acceleration West	BRPH	T & G Constructors	\$ 739,600	\$ 14,100,400	\$ -	\$ 328,307	\$ 52,835	\$ 13,719,258	Design
66	Shingle Creek ES	Schenkel Shultz	Walbridge Aldinger	\$ 121,824	\$ -	\$ -	\$ -	\$ -	\$ -	Complete
67	Oak Ridge High	Schenkel Shultz	Wharton Smith	\$ (122,586)	\$ -	\$ -	\$ -	\$ -	\$ -	Corrective work
68	Dommerich ES	Rhodes and Brito Architects	Welbro Bldg Corp.	\$ 16,685,578	\$ -	\$ -	\$ -	\$ -	\$ -	Complete
69	Lancaster ES	Rhodes and Brito Architects	Morganti Group	\$ 16,592,755	\$ -	\$ -	\$ -	\$ -	\$ -	Complete
70	Brookshire ES	Hunton Brady Architects	Skanska/JCB	\$ 13,623,234	\$ -	\$ -	\$ -	\$ -	\$ -	Complete
71	Lake Silver ES	Song and Associates	Williams Company	\$ 14,957,991	\$ -	\$ -	\$ -	\$ -	\$ -	Complete
72	Dr. Phillips Elementary	Zyscovich Architects	James Pirtle	\$ 13,587,389	\$ -	\$ -	\$ -	\$ -	\$ -	Complete
73	Ocoee ES	BRPH Architects	McCree	\$ 13,897,962	\$ -	\$ -	\$ -	\$ -	\$ -	Complete
74	OCPS Academic Center for Excellence	Baker Barrios	Williams Company	\$ 55,111,433	\$ 1,901,839	\$ -	\$ 807,865	\$ (17,364)	\$ 1,111,338	Close-out
75	Lake Weston ES	BRPH Architects	McCree	\$ 15,303,012	\$ 25,954	\$ -	\$ 25,954	\$ -	\$ -	Complete
76	West Orange Ninth GC			\$ -	\$ -	\$ -	\$ -	\$ -	\$ -	Complete/Incl as part of HS
77	Waterford ES	Starmer Ranaldi	McCree	\$ 13,136,944	\$ -	\$ -	\$ -	\$ -	\$ -	Complete
78	Cypress Creek HS	C.T Hsu	Wharton Smith	\$ 57,381,078	\$ 129,310	\$ -	\$ 24,310	\$ 5,000	\$ 100,000	Complete
79	Pineloch ES	BRPH Architects	McCree	\$ 13,590,684	\$ -	\$ -	\$ -	\$ -	\$ -	Complete
80	Lake Whitney ES	Hunton Brady Architects	Charles Perry	\$ 9,037,944	\$ 9,054	\$ -	\$ 9,054	\$ -	\$ -	Complete
81	John Young ES	Schenkel Shultz	Walbridge Aldinger	\$ 12,830,100	\$ -	\$ -	\$ -	\$ -	\$ -	Complete
82	Clay Springs ES	Rhodes and Brito Architects	Williams Company	\$ 16,914,908	\$ 14,846	\$ -	\$ 14,846	\$ -	\$ -	Complete
83	Evans High	Schenkel Shultz	Williams Company	\$ 71,499,405	\$ -	\$ -	\$ -	\$ -	\$ -	Complete
84	Lovell ES	Rhodes and Brito Architects	McCree	\$ 14,086,947	\$ -	\$ -	\$ -	\$ -	\$ -	Complete
85	Apopka ES	Harvard Jolly	Welbro Bldg Corp.	\$ 14,473,688	\$ 6,712	\$ -	\$ 6,711	\$ -	\$ 1	Complete
86	Wheatley ES	Schenkel Shultz	Gilbane Building	\$ 14,640,611	\$ -	\$ -	\$ -	\$ -	\$ -	Complete
87	Lockhart ES	Hunton Brady Architects	Morganti Group	\$ 15,868,995	\$ 4,057	\$ -	\$ 4,057	\$ -	\$ -	Complete
88	Riverside ES	Harvard Jolly	Welbro Bldg Corp.	\$ 15,467,271	\$ 41,923	\$ -	\$ 12,123	\$ 29,800	\$ -	Complete

Sales Tax Referendum Projects and Expenditures/Commitments History to Date
September 7th, 2019

Prty	School Name	Architect	Contractor	Fiscal Years 2003-2019 Expenditures	FY2020 Current Budget	20 Pre-Enc	20 Enc	20 Exp	Balance	Project Status
89	Dream Lake ES	Harvard Jolly	Charles Perry	\$ 16,958,771	\$ 15,549	\$ -	\$ 15,549	\$ -	\$ -	Complete
90	Carver MS	Hunton Brady Architects	Walker & Company	\$ 35,443,823	\$ 380,177	\$ -	\$ 71,562	\$ 14,600	\$ 294,016	Complete
91	Tangelo Park ES	BRPH Architects	Clancy & Theys	\$ 16,327,945	\$ 12,389	\$ -	\$ 12,389	\$ -	\$ -	Complete
92	Dover Shores ES	Rhodes and Brito Architects	Charles Perry	\$ 21,035,377	\$ 832,623	\$ -	\$ 198,594	\$ 5,267	\$ 628,761	Close-out
93	Sally Ride ES	Song and Associates	Charles Perry	\$ 19,122,988	\$ 1,083,012	\$ -	\$ 1,889,004	\$ (1,434,730)	\$ 628,738	Close-out
94	Engelwood ES	Rhodes and Brito Architects	Charles Perry	\$ 17,199,060	\$ 464,940	\$ -	\$ 41,102	\$ 15,491	\$ 408,347	Complete
95	Audubon Park ES			\$ -	\$ -	\$ -	\$ -	\$ -	\$ -	
96	Oak Hill ES	BRPH Architects	Clancy & Theys	\$ 17,325,507	\$ 239,493	\$ -	\$ 32,230	\$ 17,804	\$ 189,458	Complete
97	Washington Shores ES	Rhodes and Brito Architects	Williams Company	\$ 14,000,246	\$ -	\$ -	\$ -	\$ -	\$ -	Complete
98	Lake Como School	Harvard Jolly	Williams Company	\$ 35,427,927	\$ 2,382,073	\$ -	\$ 144,506	\$ 13,907	\$ 2,223,660	Close-out
99	Hillcrest ES	C.T Hsu	Wharton Smith	\$ 19,342,866	\$ 969,134	\$ -	\$ 66,036	\$ 396	\$ 902,701	Complete
100	Corner Lake MS	C.T Hsu	Wharton Smith	\$ 15,696,575	\$ 5,282,425	\$ 1,047	\$ 1,514,285	\$ 662,027	\$ 3,105,067	Construction
101	Fern Creek ES			\$ -	\$ -	\$ -	\$ -	\$ -	\$ -	
102	Rock Lake ES	BRPH Architects	Williams Company	\$ 19,108,415	\$ 506,585	\$ -	\$ 65,996	\$ 8,326	\$ 432,264	Complete
103	Durrance ES			\$ -	\$ -	\$ -	\$ -	\$ -	\$ -	
104	Kaley ES			\$ -	\$ -	\$ -	\$ -	\$ -	\$ -	
105	Union Park ES	Zyscovich Architects	Pirtle Construction	\$ 18,941,048	\$ 1,008,952	\$ -	\$ 464,071	\$ -	\$ 544,881	Close-out
106	Pine Hills ES	BRPH Architects	Pirtle Construction	\$ 20,312,400	\$ 1,209,600	\$ -	\$ 54,797	\$ 19,092	\$ 1,135,711	Close-out
107	Hungerford Prep HS			\$ -	\$ -	\$ -	\$ -	\$ -	\$ -	
108	Southwest MS	C.T Hsu	Walker & Company	\$ 5,245,841	\$ 19,522,007	\$ 33,032	\$ 10,015,557	\$ 4,467,884	\$ 5,005,533	Construction
109	Pine Castle ES			\$ -	\$ -	\$ -	\$ -	\$ -	\$ -	
110	Washington Shores PLC	C.T Hsu	Core Construction	\$ 2,910,523	\$ 687,477	\$ -	\$ 100	\$ (100)	\$ 687,477	Complete
111	Lake George ES	Hunton Brady Architects	Core Construction	\$ 8,568,443	\$ 4,447,557	\$ 698	\$ 2,504,045	\$ 100,353	\$ 1,842,462	Construction
112	Cherokee Except			\$ 23,797	\$ -	\$ -	\$ -	\$ -	\$ -	
113	Magnolia School	Harvard Jolly	CPPI	\$ 2,524,610	\$ 45,075,390	\$ 92,256	\$ 31,294,062	\$ 21,392	\$ 13,667,681	Construction
114	Mollie Ray ES	Rhodes and Brito Architects	Pirtle Construction	\$ 16,677,717	\$ 398,283	\$ -	\$ 33,250	\$ 3,497	\$ 361,536	Complete
115	Silver Star Center			\$ -	\$ -	\$ -	\$ -	\$ -	\$ -	
116	Sunrise ES	Hunton Brady Architects	Core Construction	\$ 8,578,996	\$ 4,607,004	\$ 360	\$ 2,765,200	\$ 6,966	\$ 1,834,478	Construction
117	Ivey Lane ES	Harvard Jolly	Gilbane Building	\$ 16,808,184	\$ 443,816	\$ -	\$ 22,424	\$ (7,570)	\$ 428,962	Complete
118	Lake Gem ES	Hunton Brady Architects	Wharton Smith	\$ 11,724,080	\$ 4,646,920	\$ -	\$ 1,942,772	\$ 1,104,749	\$ 1,599,399	Construction
119	Deerwood ES	Schenkel Shultz	Pirtle Construction	\$ 19,421,379	\$ 2,917,121	\$ 1,972	\$ 1,877,315	\$ 223,052	\$ 814,782	Construction
120	Pershing School	Zyscovich Architects	Williams Company	\$ 32,827,494	\$ 6,179,506	\$ 1,047	\$ 4,541,011	\$ (153,514)	\$ 1,790,961	Close-out
121	Rolling Hills ES	Zyscovich Architects	Pirtle Construction	\$ 1,157,249	\$ 18,942,751	\$ 48,961	\$ 13,655,868	\$ 368,243	\$ 4,869,679	Construction
122	Meadow Woods ES	Schenkel Shultz	Welbro Bldg Corp.	\$ 18,550,626	\$ 270,374	\$ -	\$ 54,752	\$ -	\$ 215,622	Complete
123	Ventura ES	Schenkel Shultz	Turner Construction	\$ 23,715,425	\$ 995,576	\$ 533,463	\$ 17,099	\$ (184,014)	\$ 629,028	Close-out
124	Frangus ES	BRPH Architects	Williams Company	\$ 21,878,433	\$ 1,055,567	\$ -	\$ 561,062	\$ (114,038)	\$ 608,543	Close-out
125	Winegard ES	Schenkel Shultz	Williams Company	\$ 1,094,130	\$ 21,995,870	\$ -	\$ 16,066,158	\$ 687,565	\$ 5,242,147	Construction
126	Clarcona ES			\$ -	\$ -	\$ -	\$ -	\$ -	\$ -	
127	Maxey ES	Schenkel Shultz	Clancy & Theys	\$ 16,716,559	\$ 753,945	\$ -	\$ 84,014	\$ 69,871	\$ 600,061	Close-out
128	Pinar ES	Schenkel Shultz	R.L. Burns	\$ 1,221,369	\$ 18,786,631	\$ -	\$ 15,601,131	\$ 61,659	\$ 3,123,841	Construction
129	Hungerford ES	Schenkel Shultz	Gilbane Building	\$ 15,458,885	\$ 5,763,115	\$ -	\$ 1,232,052	\$ (645,625)	\$ 5,176,687	Close-out
130	Hidden Oaks ES	Harvard Jolly	Core Construction	\$ 18,046,537	\$ 729,463	\$ -	\$ 366,016	\$ (321,485)	\$ 684,933	Close-out
131	Gateway Except			\$ -	\$ -	\$ -	\$ -	\$ -	\$ -	
132	Meadow Woods MS	C.T Hsu	Wharton Smith	\$ 777,414	\$ 22,076,586	\$ 157,964	\$ 801,962	\$ 229,483	\$ 20,887,177	Design
133	Mid Florida Tech			\$ 401,608	\$ 5,848,392	\$ -	\$ -	\$ -	\$ 5,848,392	Planning
134	Westside Tech	DLR Group	Wharton Smith	\$ 266,800	\$ 3,233,200	\$ 95,471	\$ 2,015,076	\$ 137,352	\$ 985,301	Planning

Sales Tax Referendum Projects and Expenditures/Commitments History to Date
September 7th, 2019

Prty	School Name	Architect	Contractor	Fiscal Years 2003-2019 Expenditures	FY2020 Current Budget	20 Pre-Enc	20 Enc	20 Exp	Balance	Project Status
135	Winter Park Tech			\$ 151,587	\$ 2,848,413	\$ -	\$ 60,191	\$ 6,355	\$ 2,781,867	Planning
136	Orlando Tech	Harvard Jolly	Gilbane Building	\$ 124,942	\$ 4,375,058	\$ -	\$ 151,008	\$ -	\$ 4,224,051	Planning
	Wekiva HS	Schenkel Shultz	Skanska/JCB	\$ 64,243,219	\$ -	\$ -	\$ -	\$ -	\$ -	Complete
	Colonial HS	Schenkel Shultz	Gilbane Building	\$ 11,280,889	\$ 5,719,111	\$ -	\$ 2,512,854	\$ 1,087,450	\$ 2,118,808	Construction
	Boone HS	BRPH Architects/Schenkel	Williams Company	\$ 12,159,782	\$ 18,840,218	\$ -	\$ 10,623,412	\$ (112,305)	\$ 8,329,111	Design/Construction
	43-E-SE-2				\$ 24,340,000	\$ -	\$ -	\$ -	\$ 24,340,000	
	90-K8-N-7				\$ 3,000,000	\$ -	\$ -	\$ -	\$ 3,000,000	
	113-H-W-4	Schenkel Shultz	Wharton Smith		\$ 75,000,000	\$ -	\$ -	\$ -	\$ 75,000,000	
	D/W Capital			\$ 1,326,700	\$ -	\$ -	\$ -	\$ -	\$ -	
	Sub-Total/Bldg & FF&E			\$ 1,951,954,662	\$ 355,171,220	\$ 966,271	\$ 124,656,330	\$ 6,429,668	\$ 223,118,950	
	Site Acquisition/Land related									
	OCPS Academic Center for Excellence			\$ 9,907,680	\$ 322,974	\$ -	\$ -	\$ -	\$ 322,974	
	Apopka Elementary School			\$ 888	\$ -	\$ -	\$ -	\$ -	\$ -	
	Apopka High			\$ 523,736	\$ -	\$ -	\$ -	\$ -	\$ -	
	Brookshire ES			\$ 1,088	\$ -	\$ -	\$ -	\$ -	\$ -	
	Columbia Elementary			\$ 403,330	\$ -	\$ -	\$ -	\$ -	\$ -	
	Cypress Springs ES			\$ 9,146	\$ -	\$ -	\$ -	\$ -	\$ -	
	Dover Shores ES			\$ 4,417	\$ -	\$ -	\$ -	\$ -	\$ -	
	Edgewater High			\$ 698,939	\$ -	\$ -	\$ -	\$ -	\$ -	
	Evans High Expansion			\$ 20,247,104	\$ 776	\$ -	\$ -	\$ -	\$ 776	
	Gotha Middle			\$ 69,302	\$ -	\$ -	\$ -	\$ -	\$ -	
	Lake Como School			\$ 3,080	\$ 8,513	\$ -	\$ -	\$ 8,338	\$ 175	
	Lake Weston ES			\$ 65,628	\$ 560	\$ -	\$ -	\$ -	\$ 560	
	Lovell ES			\$ 22,015	\$ -	\$ -	\$ -	\$ -	\$ -	
	Maxey ES			\$ 2,018,281	\$ 293	\$ -	\$ -	\$ -	\$ 293	
	Orlo Vista Elementary			\$ 177,057	\$ -	\$ -	\$ -	\$ -	\$ -	
	Ocoee ES			\$ 1,227,086	\$ -	\$ -	\$ -	\$ -	\$ -	
	Pershing School			\$ 2,464,179	\$ 1,783	\$ -	\$ -	\$ -	\$ 1,783	
	Rock Lake ES			\$ 4,131	\$ -	\$ -	\$ -	\$ -	\$ -	
	Rolling Hills ES			\$ 159,950	\$ -	\$ -	\$ -	\$ -	\$ -	
	Walker Middle			\$ 78,249	\$ -	\$ -	\$ -	\$ -	\$ -	
	Wheatley ES			\$ 3,200	\$ -	\$ -	\$ -	\$ -	\$ -	
	Wekiva HS			\$ 4,677,247	\$ -	\$ -	\$ -	\$ -	\$ -	
	Windy Ridge K-8			\$ 2,500	\$ -	\$ -	\$ -	\$ -	\$ -	
	Site Acquisition			\$ -	\$ 956,442	\$ -	\$ -	\$ -	\$ 956,442	
	Sub-Total/Land			\$ 42,768,234	\$ 1,291,342	\$ -	\$ -	\$ 8,338	\$ 1,283,004	
	Capital Renewal			\$ 656,228,900	\$ 37,533,500	\$ -	\$ -	\$ -	\$ 37,533,500	
	Debt 09/10 Sales Tax to QSCB			\$ 59,256,330	\$ -	\$ -	\$ -	\$ -	\$ -	
	Functional Equity			\$ -	\$ 10,000,000	\$ -	\$ -	\$ -	\$ 10,000,000	
	Digital Curriculum (Sales Tax Only)			\$ 103,155,763	\$ 61,115,105	\$ 233,999	\$ 10,008,318	\$ 1,084,674	\$ 49,788,115	
	Grand Total			\$ 2,813,363,889	\$ 465,111,168	\$ 1,200,270	\$ 134,664,648	\$ 7,522,681	\$ 321,723,569	

New Schools, Additions and Replacements Funded from COPS, IMPACT, CLASS SIZE, QSCB and SIT □
September 7th, 2019

Project History from FY2002 to Present

School Name	Project Type	Funding	Architect	Contractor	Fiscal Years 2003-2019 Expenditures	FY2020 Current Budget	20 Pre-Enc	20 Enc	20 Exp	Balance	Year Scheduled to Open	Project Status
Projects In Progress												
20-E-SW-4	New School	Impact	Rhodes & Brito	Core Construction	\$ 1,438,805	\$ 22,851,195	\$ 400,694	\$ 15,806,033	\$ 688,598	\$ 5,955,870	2020	Construction
30-E-SE-3	New School	Impact				\$ 250,000	\$ -	\$ -	\$ -	\$ 250,000	2022	
65-M-W-4	New School	Impact				\$ 350,000	\$ -	\$ -	\$ -	\$ 350,000	2023	
68-M-SE-2	New School	Impact				\$ 350,000	\$ -	\$ -	\$ -	\$ 350,000	2023	
80-H-SW-4	New School	Impact/Property Tax/Local	Schenkel Shultz	Pirtle Construction	\$ 2,045,502	\$ 106,594,498	\$ 89,600	\$ 1,402,734	\$ 455,884	\$ 104,646,280	2022	Design
83-E-SE-3	New School	Impact	Rhodes & Brito	CPPI	\$ 494,114	\$ 25,034,886	\$ 102,950	\$ 17,076,010	\$ 283,652	\$ 7,572,275	2020	Construction
85-E-W-4	New School	Impact	Rhodes & Brito	OHL	\$ 710,470	\$ 23,579,530	\$ 159,336	\$ 15,064,285	\$ 120,681	\$ 8,235,228	2020	Construction
89-E-W-4	New School	Impact				\$ 250,000	\$ -	\$ -	\$ -	\$ 250,000	2022	
113-H-W-4	New School	Impact/Sales Tax/Local	Schenkel Shultz	Wharton Smith	\$ 1,736,020	\$ 34,211,980	\$ -	\$ 2,272,583	\$ 490,872	\$ 31,448,525	2022	Design
118-E-SW-5	New School	Impact				\$ 108,750	\$ 24,276,250	\$ -	\$ 350	\$ 24,265,050	2020	Planning
132-M-W-4	New School	Impact				\$ 3,000,000	\$ -	\$ -	\$ -	\$ 3,000,000	2022	
Audubon Park School	New School	Impact/Local	Baker Barrios	Welbro Bldg Corp.	\$ 38,164,893	\$ 688,107	\$ -	\$ 249,486	\$ 59,251	\$ 379,371	2018	Close-out
Castleview ES	New School	Impact	BRPH	CPPI	\$ 20,292,826	\$ 2,432,174	\$ -	\$ 2,787,977	\$ (1,222,011)	\$ 866,208	2019	Close-out
Deerwood ES	Compreh	Local Sources	Schenkel Shultz	Pirtle Construction	\$ 22,500	\$ -	\$ -	\$ -	\$ -	\$ -	2019	Construction
Horizon West MS	New School	Impact/Local	Harvard Jolly	Wharton Smith	\$ 32,195,271	\$ 5,488,729	\$ 7,328	\$ 2,998,722	\$ 602,879	\$ 1,879,800	2019	Construction
Hungerford ES	Compreh	General Fund	Schenkel Shultz	Gilbane Building	\$ 1,300,000	\$ -	\$ -	\$ -	\$ -	\$ -	2019	Close-out
Maxey ES	Replacement	Local Sources	Schenkel Shultz	Clancy & Theys	\$ 29,496	\$ -	\$ -	\$ -	\$ -	\$ -	2018	
OCPS Academic Center for Excellence	New School	Local Sources	Baker Barrios	Williams Company Walker & Company	\$ 4,087,346	\$ -	\$ -	\$ -	\$ -	\$ -	2017	Close-out
Southwest MS	Compreh	Local Sources	C.T Hsu		\$ 176,152	\$ -	\$ -	\$ -	\$ -	\$ -	2020	Construction
Timber Springs MS	New School	Impact	Hunton Brady	Pirtle Construction	\$ 35,807,848	\$ 1,190,152	\$ -	\$ 606,385	\$ (75,620)	\$ 659,387	2017	Close-out
Water Spring ES	New School	Impact/Local	Schenkel Shultz	Welbro Bldg Corp.	\$ 18,501,449	\$ 3,904,551	\$ 698	\$ 2,194,972	\$ 425,182	\$ 1,283,699	2019	Close-out
Site Acquisition and Related Costs for Projects in Progress												
20-E-SW-4	New School	Impact	Rhodes & Brito	Core Construction	\$ 8,355,145	\$ 1,129,990	\$ -	\$ -	\$ -	\$ 1,129,990	2020	Construction
80-H-SW-4	New School	Impact	Schenkel Shultz		\$ 24,950,902	\$ 5,000	\$ -	\$ -	\$ -	\$ 5,000	2022	Design
83-E-SE-3	New School	Impact	Rhodes & Brito	CPPI	\$ 7,886,178	\$ -	\$ -	\$ -	\$ -	\$ -	2020	Construction
113-H-W-4	New School	Impact/Sales Tax	Schenkel Shultz	Wharton Smith	\$ -	\$ 4,794	\$ -	\$ 3,325	\$ 1,469	\$ -	2022	Design
Timber Springs MS	New School	Impact	Hunton Brady	Pirtle Construction	\$ 1,134,507	\$ 4,020	\$ -	\$ -	\$ -	\$ 4,020	2017	Close-out
Completed Projects												
Andover ES	New School	05 COPS/Impact/Local	Schenkel Shultz	Walker & Co.	\$ 13,610,509	\$ -	\$ -	\$ -	\$ -	\$ -	2005	
Apopka ES Addn	Addition	SIT	McCree/Design	McCree	\$ 5,008,744	\$ -	\$ -	\$ -	\$ -	\$ -	2007	
Apopka HS	Replace.	07COPS/CIT	Schenkel Shultz	Skanska/JCB	\$ 86,969,212	\$ -	\$ -	\$ -	\$ -	\$ -	2010	

New Schools, Additions and Replacements Funded from COPS, IMPACT, CLASS SIZE, QSCB and SIT □
September 7th, 2019

Project History from FY2002 to Present

School Name	Project Type	Funding	Architect	Contractor	Fiscal Years 2003-2019 Expenditures	FY2020 Current Budget	20 Pre-Enc	20 Enc	20 Exp	Balance	Year Scheduled to Open	Project Status
Arbor Ridge	Compreh	2010 QSCB/Sales Tax	Schenkel Shultz	Mills Gilbaine	\$ 12,118,553	\$ -	\$ -	\$ -	\$ -	\$ -	2014	
Avalon Center for Technical Excellence	New School	07 COPS	Reynolds, Smith and Hills	Avalon Park Foundation	\$ 16,439,424	\$ -	\$ -	\$ -	\$ -	\$ -	2007	
Avalon MS	New School	Class Size	Developer/jBeat	Williams Constr.	\$ 31,051,638	\$ -	\$ -	\$ -	\$ -	\$ -	2006	
Baldwin Park ES	New School	07 COPS	Schenkel Shultz	Balfour Beatty	\$ 16,246,507	\$ -	\$ -	\$ -	\$ -	\$ -	2007	
Bay Lake ES	New School	Impact	Schenkel Shultz	Pirtle Construction	\$ 17,917,613	\$ 6,520	\$ -	\$ 6,520	\$ -	\$ -	2016	
Bridgewater MS	New School	Impact	Schenkel Shultz	Skanska/JCB	\$ 32,320,222	\$ -	\$ -	\$ -	\$ -	\$ -	2007	
Castle Creek ES	New School	06 COPS	Schenkel Shultz	PPI/ACE	\$ 17,110,375	\$ -	\$ -	\$ -	\$ -	\$ -	2006	
Chickasaw ES	Addition	Class Size	Design Build	McCree	\$ 5,137,135	\$ -	\$ -	\$ -	\$ -	\$ -	2007	
Cypress Creek HS	Compreh	Local Sources	C.T Hsu	Wharton Smith	\$ 172,407	\$ -	\$ -	\$ -	\$ -	\$ -	2016	
Eagle Creek ES	New School	Impact/Local	Schenkel Shultz	Clancy & Theys	\$ 14,208,985	\$ -	\$ -	\$ -	\$ -	\$ -	2015	
Eagles Nest ES	New School	Impact	Schenkel Shultz	Construct Two	\$ 12,080,858	\$ -	\$ -	\$ -	\$ -	\$ -	2004	
East Lake ES	New School	02 COPS	Schenkel Shultz	PPI Constr Mgmt	\$ 14,051,480	\$ -	\$ -	\$ -	\$ -	\$ -	2005	
East River HS	New School	07 COPS	Schenkel Shultz	J.A Cummings	\$ 79,017,222	\$ -	\$ -	\$ -	\$ -	\$ -	2009	
Eccleston ES	Compreh	2010 QSCB	Rhodes and Brito	Williams Company	\$ 10,538,094	\$ -	\$ -	\$ -	\$ -	\$ -	2014	
Edgewater HS	Compreh	09 COPS/CIT	C.T. Hsu	WG Mills	\$ 88,628,285	\$ -	\$ -	\$ -	\$ -	\$ -	2011	
Forsyth Woods ES	New School	Impact/Class Size	Schenkel Shultz	Construct Two	\$ 16,824,919	\$ -	\$ -	\$ -	\$ -	\$ -	2010	
Freedom MS	New School	Impact	Schenkel Shultz	PPI/ACE	\$ 31,723,095	\$ -	\$ -	\$ -	\$ -	\$ -	2005	
Gotha MS	Compreh	SIT	Vitetta	McCree/Williams	\$ 1,990,577	\$ -	\$ -	\$ -	\$ -	\$ -	2010	
Hunter's Creek ES	Compreh	99 & 02COPS	BRPH	PPI Constr Mgmt	\$ 12,683,243	\$ -	\$ -	\$ -	\$ -	\$ -	2010	
Independence ES	New School	Impact	Schenkel Shultz	Clancy & Theys	\$ 14,092,862	\$ -	\$ -	\$ -	\$ -	\$ -	2015	
Innovation Park MS	New School	Impact	Harvard Jolly	Wharton Smith	\$ 40,628,107	\$ 246,074	\$ -	\$ 83,192	\$ -	\$ 162,882	2017	
Keene's Crossing ES	New School	Impact/Class Size/Local	Schenkel Shultz	Clancy & Theys	\$ 16,371,268	\$ -	\$ -	\$ -	\$ -	\$ -	2009	
Lake Nona MS	New School	Impact	BRPH	Clark Constr	\$ 24,322,551	\$ -	\$ -	\$ -	\$ -	\$ -	2011	
Lake Nona HS	New School	Impact	Schenkel Shultz	Doster	\$ 75,006,689	\$ -	\$ -	\$ -	\$ -	\$ -	2009	
Laureate Park ES	New School	Impact	Schenkel Shultz	Morganti Group	\$ 19,590,123	\$ 438,662	\$ -	\$ 44,424	\$ 5,000	\$ 389,238	2017	
Legacy MS	New School	Impact	Schenkel Shultz	Walker & Co.	\$ 23,293,106	\$ -	\$ -	\$ -	\$ -	\$ -	2005	
Lockhart MS	Addition	Class Size			\$ 3,448,916	\$ -	\$ -	\$ -	\$ -	\$ -	2009	
Memorial MS	Replace.	COPS	Schenkel Shultz	Balfour Beatty	\$ 35,409,829	\$ -	\$ -	\$ -	\$ -	\$ -	2008	
Metro West ES	Compreh	99COPS/Sales Tax	Starmer Ranaldi	Morganti Group	\$ 645,103	\$ -	\$ -	\$ -	\$ -	\$ -	2010	
Millennia ES	New School	05 COPS/Impact	Schenkel Shultz	Welbro Bldg Corp.	\$ 17,431,745	\$ -	\$ -	\$ -	\$ -	\$ -	2006	
Millenia Gardens ES	New School	Impact	Rhodes and Brito	Wharton Smith	\$ 21,170,871	\$ -	\$ -	\$ -	\$ -	\$ -	2016	
Moss Park ES	New School	06COPS	Schenkel Shultz	Welbro Bldg Corp.	\$ 17,008,339	\$ -	\$ -	\$ -	\$ -	\$ -	2007	
Oakridge HS	Compreh	09COPS	Schenkel Shultz	Wharton Smith	\$ 74,840,139	\$ -	\$ -	\$ -	\$ -	\$ -	2014	
Ocoee HS	New School	Impact	Schenkel Shultz	Centex Rooney	\$ 49,558,310	\$ -	\$ -	\$ -	\$ -	\$ -	2005	
Olympia HS Addn	Addition	Class Size	Design Build	McCree	\$ 6,260,861	\$ -	\$ -	\$ -	\$ -	\$ -	2007	
Prairie Lakes ES	New School	Impact Fees	Schenkel Shultz	Walker & Co.	\$ 16,162,349	\$ -	\$ -	\$ -	\$ -	\$ -	2013	
Riverside ES Addn	Addition	SIT/Class Size	Design Build	McCree	\$ 5,601,837	\$ -	\$ -	\$ -	\$ -	\$ -	2007	
Sand Lake ES	New School	Class Size/Impact	Schenkel Shultz	Skanska/JCB	\$ 17,953,722	\$ -	\$ -	\$ -	\$ -	\$ -	2006	
Shingle Creek ES	Compreh	09COPS	Schenkel Shultz	Walbridge	\$ 14,119,313	\$ -	\$ -	\$ -	\$ -	\$ -	2014	

New Schools, Additions and Replacements Funded from COPS, IMPACT, CLASS SIZE, QSCB and SIT □
September 7th, 2019

Project History from FY2002 to Present

School Name	Project Type	Funding	Architect	Contractor	Fiscal Years 2003-2019 Expenditures	FY2020 Current Budget	20 Pre-Enc	20 Enc	20 Exp	Balance	Year Scheduled to Open	Project Status
South Creek MS	New School	05 COPS	Schenkel Shultz Developer/Beat	J.A Cummings Avalon Park Foundation	\$ 27,565,247	\$ -	\$ -	\$ -	\$ -	\$ -	2006	
Stone Lakes ES	New School	Impact/07COPS	Kahli		\$ 18,286,986	\$ -	\$ -	\$ -	\$ -	\$ -	2006	
Sun Blaze	New School	Impact/QSCB 2010	Schenkel Shultz	Welbro Bldg Corp.	\$ 16,906,108	\$ -	\$ -	\$ -	\$ -	\$ -	2013	
Sunridge ES	New School	07 COPS/Impact	Schenkel Shultz	James Pirtle	\$ 13,771,314	\$ -	\$ -	\$ -	\$ -	\$ -	2012	
Sunridge MS	New School	07 COPS/Impact	Schenkel Shultz	James Pirtle	\$ 28,912,542	\$ -	\$ -	\$ -	\$ -	\$ -	2012	
Sunset Park ES	New School	06 COPS	Schenkel Shultz Reynolds, Smith and Hills	Charles Perry Construction	\$ 14,952,006	\$ -	\$ -	\$ -	\$ -	\$ -	2007	
Timber Lakes ES	New School	Impact	McCree/Design Build	Walker & Co.	\$ 16,175,955	\$ -	\$ -	\$ -	\$ -	\$ -	2008	
Union Park MS	Compreh	04 COPS		McCree	\$ 11,407,542	\$ -	\$ -	\$ -	\$ -	\$ -		
Vista Lakes ES	New School	06 COPS	Schenkel Shultz	PSA Constructors	\$ 14,841,783	\$ -	\$ -	\$ -	\$ -	\$ -	2006	
Walker MS	Compreh	2009 QSCB	Rhodes & Brito	Walker & Co.	\$ 25,279,279	\$ -	\$ -	\$ -	\$ -	\$ -	2012	
Wedgfield School	New School	Impact	Zyscovich	Pirtle Construction	\$ 33,555,708	\$ 159,802	\$ -	\$ -	\$ 59,802	\$ 100,000	2016	
Westbrooke ES	New School	Class Size	Schenkel Shultz	Construct Two	\$ 17,063,803	\$ -	\$ -	\$ -	\$ -	\$ -	2008	
Westridge MS	Compreh	2009 QSCB	Zyscovich	PPI Constr Mgmt	\$ 10,282,318	\$ -	\$ -	\$ -	\$ -	\$ -	2014	
West Creek ES	New School	02 COPS	Schenkel Shultz	Centex Rooney	\$ 11,703,254	\$ -	\$ -	\$ -	\$ -	\$ -	2004	
West Oak ES	New School	SIT/Impact	Schenkel Shultz	PPI Constr Mgmt	\$ 12,214,770	\$ -	\$ -	\$ -	\$ -	\$ -	2004	
West Orange HS	Replace.	06COPS	Schenkel Shultz	Clark Construction	\$ 81,005,614	\$ -	\$ -	\$ -	\$ -	\$ -	2009	
Westpointe ES	New School	Impact	Harvard Jolly	Gilbane	\$ 19,130,256	\$ 458,744	\$ -	\$ 79,964	\$ 539	\$ 378,241	2017	
Wetherbee ES	New School	Impact	BRPH	Skanska/JCB	\$ 14,360,232	\$ -	\$ -	\$ -	\$ -	\$ -	2011	
Whispering Oak ES	New School	02COPS	Schenkel Shultz	Hunt Gomez Construction	\$ 13,444,400	\$ -	\$ -	\$ -	\$ -	\$ -	2005	
Windermere ES	Compreh	04 COPS/Local	McCree/Design Build	McCree	\$ 3,280,534	\$ -	\$ -	\$ -	\$ -	\$ -	2008	
Windermere HS	New School	Impact/Local	Schenkel Shultz	Wharton Smith	\$ 85,940,694	\$ 3,406,099	\$ -	\$ 98,340	\$ 6,904	\$ 3,300,856	2017	
Winegard ES	Compreh	CIT/Local	McCree/Design Build	McCree	\$ 5,263,447	\$ -	\$ -	\$ -	\$ -	\$ -	2012	
Wolf Lake ES	New School	06 COPS	Schenkel Shultz	J.A Cummings	\$ 14,850,299	\$ -	\$ -	\$ -	\$ -	\$ -	2006	
Wolf Lake MS	New School	Class Size	Schenkel Shultz	J.A Cummings	\$ 28,625,324	\$ -	\$ -	\$ -	\$ -	\$ -	2006	
Wyndam Lakes ES	New School	06 COPS	Schenkel Shultz	Skanska/JCB	\$ 15,374,178	\$ -	\$ -	\$ -	\$ -	\$ -	2006	

FY2019 Sales Tax Forecast Compared To Collections
For Collections Received For The Period June 1, 2018 - May 31, 2019

	Fiscal Year 2015 Actual Collections	Fiscal Year 2016 Actual Collections	Fiscal Year 2017 Actual Collections	Fiscal Year 2018 Actual Collections	Fiscal Year 2019 Actual Collections	Fiscal Year 2020 Projected Collections	Fiscal Year 2020 Actual Collections	Date Received	Actual vs Projection				Actual vs Prior Year			
									Difference Monthly	% Difference Monthly	Difference Year To Date	% Difference Year To Date	Difference With Prior Year	% Difference With Prior Year	Cum Difference With Prior Year	% Cum Difference With Prior Year
June	16,335,673.86	15,769,023.57	18,341,978.54	19,973,576.12	21,813,615.21	21,760,232.00	22,925,740.85	8/27/2019	1,165,508.85	5.36%	1,165,508.85	5.36%	1,112,125.64	5.10%	1,112,125.64	5.10%
July	15,529,401.56	19,034,334.41	16,880,799.40	18,849,682.11	20,771,709.20	20,447,659.00			0.00	0.00%	-	0.00%	0.00	0.00%	-	0.00%
August	15,368,391.33	15,712,985.30	16,467,246.10	18,266,458.15	19,375,685.05	19,581,725.00			0.00	0.00%	-	0.00%	0.00	0.00%	-	0.00%
Quarter - Distribution	2,383,867.82	2,518,420.23	2,753,007.32	2,915,073.89	3,260,951.68	3,231,341.00			0.00	0.00%	-	0.00%	0.00	0.00%	-	0.00%
Quarter - Total	49,617,334.57	53,034,763.51	54,443,031.36	60,004,790.27	65,221,961.14	65,020,957.00	22,925,740.85				-	0.00%			-	0.00%
September	15,438,987.77	16,661,266.04	17,590,426.20	17,945,849.27	20,029,498.75	20,108,778.00			0.00	0.00%	-	0.00%	0.00	0.00%	-	0.00%
October	15,910,719.65	16,690,287.20	17,262,095.62	19,857,149.36	21,176,213.36	21,096,627.00			0.00	0.00%	-	0.00%	0.00	0.00%	-	0.00%
November	15,573,411.58	17,376,140.77	18,502,526.16	21,069,313.79	21,848,769.67	22,227,593.00			0.00	0.00%	-	0.00%	0.00	0.00%	-	0.00%
Quarter - Distribution	2,617,150.83	2,472,960.60	2,960,461.12	3,172,630.28	3,646,731.75	3,539,234.00			0.00	0.00%	-	0.00%	0.00	0.00%	-	0.00%
Quarter - Total	49,540,269.83	53,200,654.61	56,315,509.10	62,044,942.70	66,701,213.53	66,972,232.00	-				-	0.00%			-	0.00%
First 1/2 Year Total	99,157,604.40	106,235,418.12	110,758,540.46	122,049,732.97	131,923,174.67	131,993,189.00	22,925,740.85				-	0.00%			-	0.00%
December	19,056,350.10	19,834,046.86	20,131,048.05	22,917,543.47	23,379,046.84	24,039,594.00			0.00	0.00%	-	0.00%	0.00	0.00%	-	0.00%
January	16,366,512.92	16,719,170.09	17,580,911.73	20,407,250.45	21,073,610.65	21,373,950.00			0.00	0.00%	-	0.00%	0.00	0.00%	-	0.00%
February	16,492,170.58	17,752,007.93	18,459,672.74	20,510,583.92	21,507,566.51	21,886,406.00			0.00	0.00%	-	0.00%	0.00	0.00%	-	0.00%
Quarter - Distribution	2,770,545.75	2,763,706.36	3,066,413.56	3,421,591.03	3,452,049.34	3,597,220.00			0.00	0.00%	-	0.00%	0.00	0.00%	-	0.00%
Quarter - Total	54,685,579.35	57,068,931.24	59,238,046.08	67,256,968.87	69,412,273.34	70,897,170.00	-				-	0.00%			-	0.00%
3/4 Year Total	153,843,183.75	163,304,349.36	169,996,586.54	189,306,701.84	201,335,448.01	202,890,359.00	22,925,740.85				-	0.00%			-	0.00%
March	19,571,396.06	20,792,518.26	21,849,939.83	24,249,252.64	25,501,978.07	25,911,851.00			0.00	0.00%	-	0.00%	0.00	0.00%	-	0.00%
April	17,559,410.38	17,300,074.54	19,885,162.89	21,040,913.91	22,737,565.78	23,039,327.00			0.00	0.00%	-	0.00%	0.00	0.00%	-	0.00%
May	16,048,202.14	17,002,486.22	19,150,452.99	19,768,693.34	21,730,574.93	21,948,615.00			0.00	0.00%	-	0.00%	0.00	0.00%	-	0.00%
Quarter - Distribution	2,518,420.23	5,624,980.39	2,991,334.50	3,283,686.58	3,151,331.98	3,411,316.00			0.00	0.00%	-	0.00%	0.00	0.00%	-	0.00%
Quarter - Total	55,697,428.81	60,720,059.41	63,876,890.21	68,342,546.47	73,121,450.76	74,311,109.00	-				-	0.00%			-	0.00%
Second 1/2 Year Total	110,383,008.16	117,788,990.65	123,114,936.29	135,599,515.34	142,533,724.10	145,208,279.00	-				-	0.00%			-	0.00%
Annual Total	\$209,540,612.56	\$224,024,408.77	\$233,873,476.75	\$257,649,248.31	\$274,456,898.77	\$277,201,468.00	\$ 22,925,740.85				-	0.00%			-	0.00%

Orange County Public Schools Sales Tax Collection History

Fiscal Year	Amount
2003	48,842,739.57
2004	138,701,456.04
2005	149,353,778.11
2006	166,421,562.32
2007	170,597,435.85
2008	166,190,269.10
2009	154,176,277.50
2010	150,843,956.58
2011	163,594,345.29
2012	170,826,443.50
2013	181,301,579.35
2014	191,770,162.65
2015	209,540,612.56
2016	224,024,408.77
2017	233,873,476.75
2018	257,649,248.31
2019	274,456,898.77
2020	22,925,740.85
Total	3,075,090,391.87



PROJECT STATUS SUMMARY REPORT
NEW AND REPLACEMENT SCHOOLS
 September 19, 2019

Funding Source	Priority #	School Name	F1 2019 Board Adopted Budget	F2 Adopted Budget Changes	F3 Tentative 2020 Board Adopted Budget	Estimated Cost At Completion	Variance	GMP Amount	F4 Construction Change Orders		F5 ODP Change Orders		Approved Construction		F6 Number of Days Past Substantial (Close-out)	Contract Type	CM / GC Firm	AE Firm
									Amount	#	Deducts	#	NTP Construct	Contract Subst. Com Schedule				
Budget																		
PLANNING PHASE																		
Impact		Site 43-E-SE-2	27,710,000	(1,960,000)	25,750,000	25,750,000												
Impact		Site 118-E-SW-5	24,290,000	1,465,000	25,755,000	25,755,000												
Sales Tax	135	OTC Winter Park Campus	30,800,000	1,670,000	32,470,000	32,470,000												
		Sub Total	82,800,000	1,175,000	83,975,000	83,975,000												
DESIGN PHASE																		
Sales Tax	134	Site 73-T-W-7 (OTC Westside Campus)	36,500,000	2,260,000	38,760,000	38,760,000												
Impact	New	Site 80-H-SW-4	115,040,000	-	115,040,000	115,040,000												
Impact	New	Site 113-H-W-4	115,040,000	2,308,000	117,348,000	117,348,000												
		Sub Total	266,580,000	4,568,000	271,148,000	271,148,000												
CONSTRUCTION PHASE																		
Impact	New	Site 20-E-SW-4	24,290,000	-	24,290,000	24,290,000	-	19,866,684		(4,966,671)	1	5/17/2019	4/10/2020		GMP	CORE	Rhodes + Brito	
Impact	New	Site 83-E-SE-3	25,529,000	-	25,529,000	25,529,000	-	20,969,104				7/1/2019	6/25/2020		GMP	CPPI	Rhodes + Brito	
Impact	New	Site 85-E-W-4	24,290,000	-	24,290,000	22,467,000	1,823,000	17,900,162				7/24/2019	6/10/2020		GMP	OHL	Rhodes + Brito	
Sales Tax		Boone HS (Auditorium, gym, cafeteria)	31,000,000	-	31,000,000	31,000,000	-	23,288,274		(2,921,487)	2	6/20/2018	7/7/2020		GMP	Williams Co	Schenkel	
Sales Tax		Colonial HS (Auditorium)	17,000,000	-	17,000,000	17,000,000	-	13,836,772	4,915	1	(3,459,193)	2	6/8/2018	7/31/2019	GMP	Gilbane	Schenkel	
Sales Tax	119	Deerwood ES	22,361,000	-	22,361,000	22,361,000	-	18,690,486	170,704	2	(4,672,621)	1	6/1/2018	10/15/2019	GMP	Pirtle	Schenkel	
Impact	New	Horizon West MS (Site 37-M-SW-4)	38,614,000	(930,000)	37,684,000	37,684,000	-	30,366,051	239,887	3	(9,016,459)	3	2/23/2018	9/13/2019	6	GMP	Wharton	Harvard Jolly
Sales Tax		Magnolia School and Behavior Center	47,600,000	-	47,600,000	47,600,000	-	38,630,833				7/3/2019	7/23/2021		GMP	CPPI	Harvard Jolly	
Sales Tax	128	Pinar ES	20,008,000	-	20,008,000	20,008,000	-	16,333,189			(4,083,297)	1	6/25/2019	10/2/2020		GMP	RL Burns	Schenkel
Sales Tax	121	Rolling Hills ES	20,100,000	-	20,100,000	20,100,000	-	15,988,088			(3,997,022)	1	6/25/2019	5/29/2020		GMP	Pirtle	Zyschovich
Sales Tax	125	Winegard ES	23,090,000	-	23,090,000	23,090,000	-	18,735,137				7/2/2019	11/13/2020		GMP	Williams Co	Schenkel	
CIT	New	Pine Hills Transportation	31,000,000	-	31,000,000	31,000,000	-	21,742,090	1,188,897	7	(5,177,553)	3	9/21/2017	11/19/2018		GMP	Ajax	BRPH
		Sub Total	324,882,000	(930,000)	323,952,000	322,129,000	1,823,000	\$256,346,870	\$1,604,402	13	(38,294,304)	14						
CLOSE OUT PHASE																		
Impact	New	Audubon Park School (Site 133-K8-E-6)	39,043,000	(190,000)	38,853,000	38,853,000	-	31,003,724	(303,876)	3	(8,502,182)	3	3/17/2017	7/24/2018	422	GMP	Welbro	Baker Barrios
Impact	New	Castleview ES (Site 25-E-SW-4)	23,300,000	(575,000)	22,725,000	22,725,000	-	18,515,591	285,531	4	(4,890,018)	2	6/1/2018	8/14/2019	36	GMP	CPPI	BRPH
Impact	Relief	Timber Springs MS (Site 21-M-E-2)	36,998,000	-	36,998,000	36,998,000	-	30,047,858	(175,273)	4	(7,843,625)	3	2/1/2016	6/23/2017	818	GMP	Pirtle	Hunton Brady
Impact	New	Water Spring ES (Site 49-E-W-4)	23,260,000	(854,000)	22,406,000	22,406,000	-	18,048,328	257,615	3	(4,880,087)	2	6/1/2018	7/3/2019	78	GMP	Welbro	Schenkel
Sales Tax	124	Frangus ES	23,470,000	(536,000)	22,934,000	22,934,000	-	18,622,711	86,472	2	(4,559,106)	2	7/25/2017	10/30/2018	324	GMP	Williams Co	BRPH
Sales Tax	130	Hidden Oaks ES	19,056,000	(280,000)	18,776,000	18,776,000	-	14,608,038	170,273	3	(3,630,193)	2	7/24/2017	9/18/2018	366	GMP	CORE	Harvard Jolly
Sales Tax	129	Hungerford ES	22,522,000	-	22,522,000	22,522,000	-	14,723,364	106,450	4	(3,684,500)	1	7/27/2017	10/30/2018	324	GMP	Gilbane	Schenkel
Sales Tax	New	Lake Como School (Site 205-K8-SW-6)	37,810,000	-	37,810,000	36,679,000	1,131,000	30,108,765	(1,062,403)	4	(7,359,254)	2	2/7/2017	6/19/2018	457	GMP	Williams Co	Harvard Jolly
Sales Tax	127	Maxey ES (Site 207-E-W-7)	17,790,000	(290,000)	17,500,000	17,500,000	-	14,609,699	(271,741)	5	(3,508,745)	2	7/17/2017	7/17/2018	429	GMP	Clancy & Theys	Schenkel
Sales Tax	New	OCPS ACE (PS8 Site 131-PS8-SW-5)	61,103,000	-	61,103,000	61,103,000	-	51,499,557	243,050	7	(13,294,657)	2	4/16/2015	8/7/2017	773	GMP	Williams Co	Baker Barrios
Sales Tax	120	Pershing School (Site 208-K8-SE-3)	39,007,000	-	39,007,000	39,007,000	-	29,563,321	107,154	6	(7,702,440)	2	2/23/2018	6/28/2019	83	GMP	Williams Co	Zyschovich
Sales Tax	106	Pine Hills ES	21,634,000	(112,000)	21,522,000	21,271,000	251,000	17,489,097	(306,980)	2	(4,028,915)	2	7/20/2017	7/26/2018	420	GMP	Pirtle	BRPH
Sales Tax	123	Ventura ES Replacement	24,711,000	-	24,711,000	24,711,000	-	18,338,709	46,735	12	(3,888,544)	2	10/1/2015	10/10/2017	709	GMP	Turner	Schenkel
		Sub Total	389,704,000	(2,837,000)	386,867,000	385,485,000	1,382,000	307,178,762	(816,993)	59	(77,772,266)	27						
Grand Total			1,063,966,000	1,976,000	1,065,942,000	1,062,737,000	3,205,000	563,525,632	787,409	72	(116,066,570)	41						

Footnotes

- F1 - Reflects figure from the 10yr Capital Budget dated September 11, 2018.
- F2 - Reflects changes to the FY 2019 board adopted budget.
- F3- Amount comprised of prior year expenditures, current and future planned funding (Summary Budget FY 2019). There are no land costs included.
- F4 - Reflects total number of change orders and cumulative change order amount. Does not include ODP deductive and reconciliation change orders.
- F5 - Reflects the total amount and number of ODP deductive and reconciliation change orders to date.
- F6 - Reflects number of days beyond substantial completion. See justification below under Close Out Delays.

Close Out Delays

- Audubon Park School** - CFI awaits upgrade of the safety enhancement system.
- Frangus ES** - CFI awaits upgrade of the safety enhancement system.
- Hidden Oaks ES** - CFI awaits upgrade of the safety enhancement system.
- Hungerford ES** - CFI awaits upgrade of the safety enhancement system.
- Lake Como School** - CFI awaits upgrade of the safety enhancement system.
- Maxey ES** - CFI awaits upgrade of the safety enhancement system.
- Timber Springs MS** - CFI delayed due to corrective work required to be performed on the soccer field which was not discovered until post substantial completion and upgrade of the safety enhancement system.
- OCPS ACE** - CFI delayed due to corrective work required to be performed on the soccer field which was not discovered until post substantial completion and upgrade of the safety enhancement system.
- Pine Hills ES** - CFI awaits upgrade of the safety enhancement system.
- Ventura ES** - CFI delayed due to reconciliation of final project costs and time impacts and upgrade to the safety enhancement system.

Other

Boone HS: GMP amount represents the sum of the Auditorium, Gymnasium, and Generator Packages.



PROJECT STATUS SUMMARY REPORT
NEW AND REPLACEMENT SCHOOLS
 September 19, 2019

Funding Source	Priority #	School Name	Explanation of Adopted Budget Changes
PLANNING PHASE			
Impact		Site 43-E-SE-2	Reduction in estimate (escalation) as the completion date moved from 2023 to 2021
Impact		Site 118-E-SW-5	estimate revised to account for de-escalation as the completion date moved from 2020 to 2021
Sales Tax	135	OTC Winter Park Campus	Estimate updated to account for specialty equipment.
Sales Tax	134	Site 73-T-W-7 (OTC Westside Campus)	Estimate updated to account for specialty equipment.
DESIGN PHASE			
Impact	New	Site 113-H-W-4	Estimate adjusted to account for scope of work related to the proposed Bus Depot.
CONSTRUCTION PHASE			
Impact	New	Horizon West MS (Site 37-M-SW-4)	Reduction of cost projections as project nears completion.
CLOSE OUT PHASE			
Impact	New	Audubon Park School (Site 133-K8-E-6)	Reduction of cost projections as project nears completion.
Impact	New	Castlevew ES (Site 25-E-SW-4)	Reduction of cost projections as project nears completion.
Impact	New	Water Spring ES (Site 49-E-W-4)	Reduction of cost projections as project nears completion.
Sales Tax	124	Frangus ES	Reduction of cost projections as project nears completion.
Sales Tax	130	Hidden Oaks ES	Reduction of cost projections as project nears completion.
Sales Tax	127	Maxey ES (Site 207-E-W-7)	Reduction of cost projections as project nears completion.
Sales Tax	106	Pine Hills ES	Reduction of cost projections as project nears completion.



PROJECT STATUS SUMMARY REPORT

COMPREHENSIVE SCHOOLS

September 19, 2019

Funding Source	Priority #	School Name	F1 2019 Board Adopted Budget	F2 Adopted Budget Changes	F3 Tentative 2020 Board Adopted Budget	Estimated Cost At Completion	Variance	GMP Amount	F4 Construction Change Orders		F5 ODP Change Orders		Approved Construction		F6 Number of Days Past Substantial (Close-out)	Contract Type	CM / GC Firm	AE Firm	
									Amount	#	Deducts	#	NTP Construct	Contract Subst. Com					
Budget													Schedule		Contracting				
PLANNING PHASE																			
Sales Tax	133	OTC Mid-Florida Campus	81,600,000	24,730,000	106,330,000	106,330,000													
Sales Tax	136	OTC Orlando Campus	25,000,000	5,447,000	30,447,000	30,447,000													
		Sub Total	106,600,000	\$30,177,000	\$136,777,000	\$136,777,000													
DESIGN PHASE																			
Sales Tax	65	Acceleration West	14,000,000	840,000	14,840,000	14,840,000													
Sales Tax	132	Meadow Woods MS	25,204,000	-	25,204,000	25,204,000													
		Sub Total	39,204,000	840,000	\$40,044,000	\$40,044,000													
CONSTRUCTION PHASE																			
Sales Tax	100	Corner Lake MS	21,151,000	(172,000)	20,979,000	20,979,000	-	13,851,636	606,437	5	(3,462,909)	1	3/9/2018	8/30/2019	20	GMP	Wharton	C.T. Hsu	
Sales Tax	118	Lake Gem ES	17,317,000	(946,000)	16,371,000	16,371,000	-	11,125,623	440,324	4	(2,110,329)	1	6/20/2018	9/4/2019	15	GMP	Wharton	Hunton Brady	
Sales Tax	111	Lake George ES	13,381,000	(365,000)	13,016,000	13,016,000	-	8,699,086	312,159	3	(2,174,772)	1	6/20/2018	9/23/2019		GMP	CORE	Hunton Brady	
Sales Tax	108	Southwest MS	25,204,000	(260,000)	24,944,000	24,944,000	-	15,899,687			(2,918,793)	1	2/15/2019	7/27/2020		GMP	Walker	C.T. Hsu	
Sales Tax	116	Sunrise ES	13,186,000	-	13,186,000	13,186,000	-	8,786,527	310,444	3	(2,196,632)	1	6/20/2018	9/23/2019		GMP	CORE	Hunton Brady	
		Sub Total	90,239,000	(\$1,743,000)	\$88,496,000	\$88,496,000	-	\$58,362,559	1,669,363	15	(12,863,434)	5							
Actual																			
CLOSE OUT PHASE																			
Sales Tax	92	Dover Shores ES (Jackson MS)	22,150,000	(282,000)	21,868,000	21,868,000	-	18,029,283	(171,784)	5	(3,980,889)	5	7/18/2017	12/7/2018	286	GMP	CPPI	Rhodes & Brito	
Sales Tax	93	Sally Ride ES	20,448,000	(242,000)	20,206,000	20,206,000	-	15,663,493	279,033	3	(3,603,742)	2	7/17/2017	10/23/2018	331	GMP	Charles Perry	Song & Assoc	
Sales Tax	105	Union Park ES	19,950,000	-	19,950,000	19,950,000	-	16,317,570	105,022	2	(3,195,456)	2	7/27/2017	10/26/2018	328	GMP	Pirtle	Zyscovich	
		Sub Total	62,548,000	(\$524,000)	\$62,024,000	\$62,024,000	\$0	50,010,346	212,270	10	(10,780,086)	9							
Grand Total			298,591,000	28,750,000	327,341,000	\$327,341,000	\$0	108,372,905	1,881,634	25	(23,643,520)	14							

Footnotes

- F1 - Reflects figure from the 10yr Capital Budget dated September 11, 2018.
- F2 - Reflects changes to the FY 2019 board adopted budget.
- F3- Figure comprised of prior year expenditures, current and future planned funding (Adopted Summary Budget FY 2019). There are no land costs included.
- F4 - Reflects total number of change orders and cumulative change order amount. Does not include ODP deductive and reconciliation change orders.
- F5 - Reflects the total amount and number of ODP deductive and reconciliation change orders to date.
- F6 - Reflects number of days beyond substantial completion. See justification below under Close Out Delays.

Close Out Delays

- Dover Shores ES** – CFI awaits upgrade of the safety enhancement system.
- Sally Ride ES** – CFI awaits upgrade of the safety enhancement system.
- Union Park ES** –CFI awaits upgrade of the safety enhancement system.



PROJECT STATUS SUMMARY REPORT

COMPREHENSIVE SCHOOLS

September 19, 2019

Funding Source	Priority #	School Name	Explanation of Adopted Budget Changes
PLANNING PHASE			
Sales Tax	133	OTC Mid-Florida Campus	Increased the projected GMP based on a revised estimate of the redefined scope of work and specialty equipment.
Sales Tax	136	OTC Orlando Campus	Estimate revised based on refinement of the scope of work and specialty equipment
DESIGN PHASE			
Sales Tax	65	Acceleration West	Estimated GMP value adjusted based on scope of work reflected on the phase ii design cost estimate and allowing for current market conditions.
CONSTRUCTION PHASE			
Sales Tax	100	Corner Lake MS	Reduction of cost projections as project nears completion.
Sales Tax	118	Lake Gem ES	Reduction of cost projections as project nears completion.
Sales Tax	111	Lake George ES	Reduction of cost projections as project nears completion.
Sales Tax	108	Southwest MS	Reduction of cost projections as project nears completion.
CLOSE OUT PHASE			
Sales Tax	100	Corner Lake MS	Reduction of cost projections as project nears completion.
Sales Tax	92	Dover Shores ES (Jackson MS)	Reduction of cost projections as project nears completion.
Sales Tax	118	Lake Gem ES	Reduction of cost projections as project nears completion.
Sales Tax	93	Sally Ride ES	Reduction of cost projections as project nears completion.

Construction Update as of September 6, 2019

We now have **17 projects** under varying degrees of construction amounting to approx. **\$412M**.

5 – Comprehensive = \$88,496,000

- **Corner Lake MS** (Comprehensive Renovation) – NTP was issued on March 9, 2018, and involves four separate phases with an overall substantial completion scheduled for July 26, 2019.
 - The initial phase involving the renovation of the cafeteria/kitchen, gymnasium, band/chorus and play courts/track were completed in August 2018; the 2nd phase involving the renovation of Classroom building 3 was completed on December 14, 2018. 3rd Phase, renovation of classroom building 2 was recently completed on May 31, 2019. The 4th and last phase, accounting for the renovation of the Administration, Media and Votech buildings, along with the balance of the site related items was substantially completed on July 30th.
 - A subsequent phase to address safety enhancements was recently added and scheduled to be substantially completed on August 30th; however, is tracking for a mid-September 2019 completion.
- **Lake Gem ES** (Comprehensive Renovation) – Construction NTP was issued on June 20, 2018, and involves six separate phases including the addition of a twelve classroom building, with an overall substantial completion scheduled for August 1, 2019.
 - The initial phase involving a new Central Energy Plant and a new 12 classroom building was substantially completed on December 20, 2018. The second phase involving the renovation of Classroom Building 5 was substantially completed on February 8, 2019. The third phase involving the renovation of Classroom Building 6 was completed on March 22, 2019. Phase 4 - the renovation of Classroom Building 3 was completed on May 1, 2019. Phase 5 - the renovation of Classroom Building 2 was completed June 28, 2019; and the 6th and final phase, the renovation of Admin/Media and Cafeteria buildings was completed on August 5, 2019.
 - A subsequent phase to address safety enhancements was added and scheduled to be substantially completed on September 4th; however, is tracking for a mid-September 2019 completion.
- **Lake George ES** (Comprehensive Renovation) – Construction NTP was issued on June 20, 2018, and involves five separate phases with an overall substantial completion scheduled for July 26, 2019.
 - The initial phase involving the renovation of Classroom Building 5 was substantially completed on December 14, 2018. The second phase involving the renovation of Classroom Building 3 was substantially completed on February 8, 2019. The third phase

- involving the renovation of Classroom Building 6 was completed on April 12, 2019.
 - Phase 4 involving the renovation of Classroom Building 2 was just completed on June 10, 2019; and the 5th and final phase, the renovation of Admin/Media and Cafeteria buildings, along with the balance of sitework was substantially completed on July 31, 2019.
 - A subsequent phase to address safety enhancements was added and scheduled to be substantially completed on September 23, 2019.
- **Sunrise ES** (Comprehensive/Renovation) – Construction NTP was issued on June 20, 2018, and involves five separate phases with an overall substantial completion scheduled for July 26, 2019.
 - The initial phase involving the renovation of Classroom Building 3 was substantially completed on December 14, 2018. The second phase involving the renovation of Classroom Building 5 was substantially completed on February 7, 2019. The third phase involving the renovation of Classroom Building 6 was completed on April 12, 2019. Phase 4 involving the renovation of Classroom Building 2 was just completed on June 11, 2019. The 5th and final phase, the renovation of Admin/Media and Cafeteria buildings along with the balance of sitework was completed on by July 31, 2019.
 - A subsequent phase to address safety enhancements was added and scheduled to be substantially completed on September 23, 2019.
- **Southwest MS** (Comprehensive Renovation) – NTP was issued on February 15, 2019, and involves five separate phases with an overall substantial completion scheduled for July 27, 2020.
 - Phase 1 separated into three sub-phases: the renovation of the (1A) chiller yard and replacement of chillers was substantially completed on August 30, 2019 and (1B) administration, gymnasium, cafeteria, and classroom building 900 were substantially completed on August 7, 2019, and (1C) classroom building 200 is scheduled to be completed by December 27, 2019.

And,

12 - New/Replacements = \$323,952,000

- **Pine Hills Transportation Compound** – a construction NTP was issued on September 21, 2017, for this Design-Build transportation project, with an overall project completion scheduled for November 2018. The project schedule milestones account for multiple phases, with the Bus Parking and Staging areas to have been completed by March 8, 2018, the administration building to be substantially complete in August 2018, and the driver’s lounge and parking, along with the maintenance building to be substantially completed in November 2018.

Due to unsuitable soils material discoveries, and additional excavation and replacement thereof, the project has experienced extensive time delays and requests for additional compensation, whereby the Design-Builder reported an overall projected substantial completion date of August 30, 2019. Based on current progress, a late September 2019 completion is being reported.

- Initial phase involving the Bus Parking and Staging areas was substantially completed on December 10, 2018, and the Administration Building was completed on January 8, 2019.
 - The driver's Lounges and associated parking were completed on February 14, 2019.
 - Based on claims issued by the Design-Builder, additional scope and cost associated with discovered unsuitable soils and debris were settled for just over \$1M.
 - Separately, additional debris and loose soils were uncovered at the location for the new fueling island, for which has been addressed.
- **Horizon West Middle School** (Bridgewater area relief) - construction NTP was issued on February 23, 2018, with an overall project substantial completion originally scheduled for May 29, 2019.
 - Due to the delayed start associated with sand skink mitigation measures and gopher tortoise relocations, mobilization for construction was not granted until April 24, 2018, resulting in a 2 month delay. The team worked out an agreement with the CM to mitigate the overall delay to 33 days, and a revised substantial completion date of July 1, 2019, for which was achieved accordingly.
 - A subsequent phase to address safety enhancements was recently added and scheduled to be substantially completed by the end of September 2019.
 - **Deerwood ES** (Replacement) - construction NTP was issued on June 1, 2018, and a main building substantial completion was achieved on June 11, 2019; and the subsequent existing building demo and related site amenities are scheduled for completion by October 15, 2019.
 - **Colonial HS – Auditorium** (Replacement) - construction NTP was issued on June 8, 2018, and achieved a new building substantial completion on August 6, 2019.
 - Due to impacts associated with existing underground utilities, and the need for the school to utilize the existing band building over the summer, the demolition of the existing band building and related sitework is now scheduled to be completed mid-October 2019.
 - **Boone HS – Auditorium/Gymnasium** (Replacement)
 - Auditorium - a construction NTP was issued on June 20, 2018 and an overall substantial completion was achieved on June 21, 2019.
 - Gymnasium - a construction NTP was issued on July 23, 2019, with an overall substantial completion scheduled for July 7, 2020.

- **Site 20-E-SW-4** (South I-Drive area relief) - construction NTP was issued on May 17, 2019, with an overall substantial completion scheduled for April 10, 2020.
 - Due to delays associated with the issuance of the construction NTP and gopher tortoise relocation PO issuance, as well as, tortoise recipient site availability. A time extension of 33 calendar days is being processed.
- **Pinar ES** (Replacement/Renovation) - construction NTP was issued on June 25, 2019, and the completion of the new main building is scheduled for substantial completion on April 3, 2020; and the subsequent existing building demo and related site amenities are scheduled for completion by October 2, 2020.
- **Rolling Hills ES** (Replacement/Renovation) - construction NTP was issued on June 25, 2019, with an overall substantial completion scheduled for May 29, 2020.
 - Due to a late issuance of the NTP to the CM, a potential 10 day time extension has been requested by the CM.
- **Site 83-E-SE-3** (SE Orlando/Lee Vista area relief) – an early site package construction notice to proceed was issued on July 1, 2019, and an off-site retention pond and new building construction NTP was issued on August 14, 2019, with an overall substantial completion scheduled for June 25, 2020.
- **Site 85-E-W-4** (Horizon West/Bridgewater Village South relief) - construction NTP was issued on July 24, 2019, with an overall substantial completion scheduled for June 10, 2020.
- **Magnolia School and Behavior Center** (New/Replacement) - a construction notice to proceed was issued on July 3, 2019 for the overall project. The replacement building for the Magnolia School is scheduled for an overall substantial completion on June 8, 2020. And upon completion, the new Behavior Center building will commence with a scheduled completion on May 14, 2021. The balance of the site amenities, track and play courts, are then scheduled for an overall completion on July 23, 2021.
- **Winegard ES** - (Replacement/Renovation) - construction NTP was issued on July 2, 2019, with a main building substantial completion scheduled for June 1, 2020, and an existing building demo and related site amenities, along with a limited renovation of the existing classroom building substantial completion scheduled for November 13, 2020.

Since our last report:

- Substantial Completions achieved:
 - Boone HS – Auditorium - an overall substantial completion was achieved on June 21, 2019.
 - Castlerview ES - a building substantial completion was achieved on June 25, 2019, and an overall site and entry roadway completion was achieved on July 3, 2019.
 - Pershing School – Achieved an overall project substantial completion on June 28, 2019.

- Horizon West Middle School - an overall project substantial completion was achieved as scheduled on July 1, 2019.
 - Water Spring Elementary - an overall substantial completion was achieved on July 3, 2019.
 - Corner Lake MS - The 4th and last phase, accounting for the renovation of the Administration, Media and Votech buildings, along with the balance of the site related items was substantially completed on July 30th.
 - Lake George ES and Sunrise ES - both achieved final substantial completions of their respective 5th and final phases - the renovation of Admin/Media and Cafeteria buildings, on July 31, 2019.
 - Lake Gem ES - Phase 5 - the renovation of Classroom building 2 was completed on June 28, 2019; and phase 6 - the renovation of Admin/Media and cafeteria, as well as, the overall substantial completion was achieved on August 5, 2019.
 - Colonial HS – Auditorium - substantial completion of the new auditorium building was achieved on August 6, 2019.
 - Southwest MS - the administration, gymnasium, cafeteria, and classroom building 900 renovations were substantially completed on August 7, 2019, and the renovation of the chiller yard and replacement of the chillers was completed on August 30, 2019.
- Notice to Proceeds issued:
 - Pinar ES - construction NTP was issued on June 25, 2019.
 - Rolling Hills ES - construction NTP was issued on June 25, 2019.
 - Winegard ES - a construction notice to proceed was issued on July 2, 2019.
 - Magnolia School and Behavior Center - a construction notice to proceed was issued on July 3, 2019.
 - Boone HS – Gymnasium - a construction NTP was issued on July 23, 2019.
 - Site 85-E-W-4 (Horizon West/Bridgewater Village South relief) - construction NTP was issued on July 24, 2019.
 - Site 83-E-SE-3 (SE Orlando/Lee Vista area relief) – an early site package construction notice to proceed was issued on July 1, 2019, and an off-site retention and main building NTPs were issued on August 14, 2019.
 - Anticipated future milestones for construction:
 - Pine Hills Transportation Compound – anticipate an overall projected substantial completion late September 2019.
 - Acceleration West – construction NTP is anticipated mid-late September 2019.

- Site 80-H-SW-4 (Dr. Phillips area relief) – early site package NTP is expected mid-late September 2019.
- Site 113-H-W-4 (Horizon West/Village F relief) – early site package NTP is late October 2019.
- Deerwood ES (Replacement) - existing building demo and related site amenities are scheduled for completion by October 15, 2019.
- Colonial HS – Auditorium (Replacement) - the demolition of the existing band building and related sitework is now scheduled to be completed mid-October 2019.

For:

Close-out

- We now have (16) projects in close-out:
 - Timber Springs MS
 - OCPS Academic Center for Excellence (ACE)
 - Ventura ES
 - Audubon Park School*
 - Lake Como School*
 - Maxey ES*
 - Pine Hills ES*
 - Hidden Oaks ES*
 - Sally Ride ES
 - Union Park ES
 - Frangus ES*
 - Hungerford ES
 - Dover Shores ES/Jackson MS Athletic areas and road re-alignment*
 - Pershing School – recently added
 - Castleview Elementary School – recently added
 - Water Spring Elementary – recently added

Note: It has been decided, a project’s CFIs should not be presented to the Board for approval, if a public safety radio frequency assessment has determined that additional measures are warranted.

*Indicates all close-out requirements are complete, other than the Radio Enhancement measures.

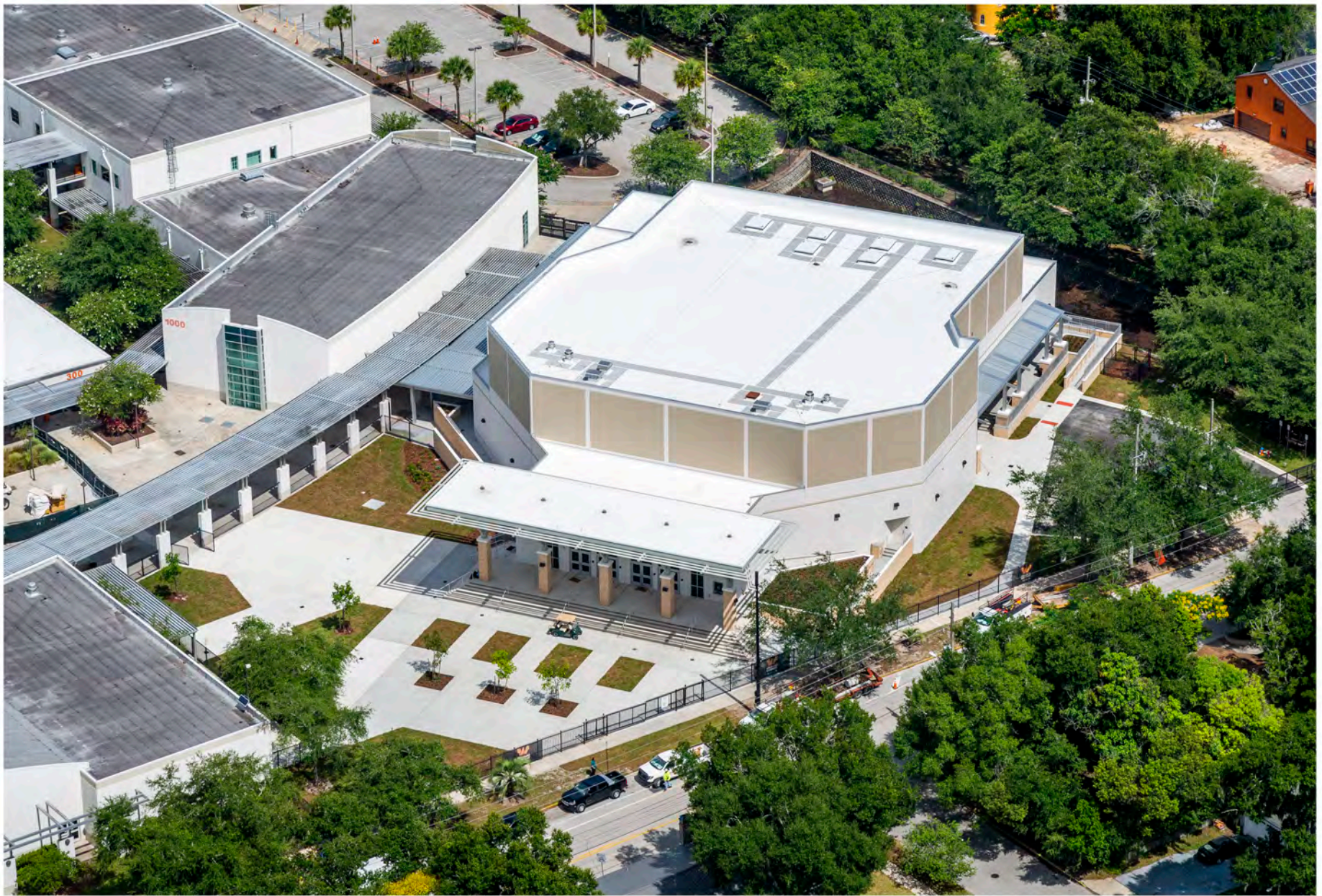
For:

Design

- We currently have (5) projects in the design phase:
 - Acceleration West
 - Meadow Woods MS
 - Site 113-H-W-4 (Horizon West/Village F relief)
 - Site 80-H-SW-4 (Dr. Phillips area relief)
 - Site 73-T-W-7 – Replacement campus for Orange Technical College – Westside Campus

Anticipated future milestones for Design:

- Orange Technical College – Orlando Campus (Comprehensive Renovation)
- Site 43-E-SE-2 (Lake Nona area ES relief)



Boone High School Auditorium

07.01.19





Castleview Elementary School

07.22.19 Page 25 of 77





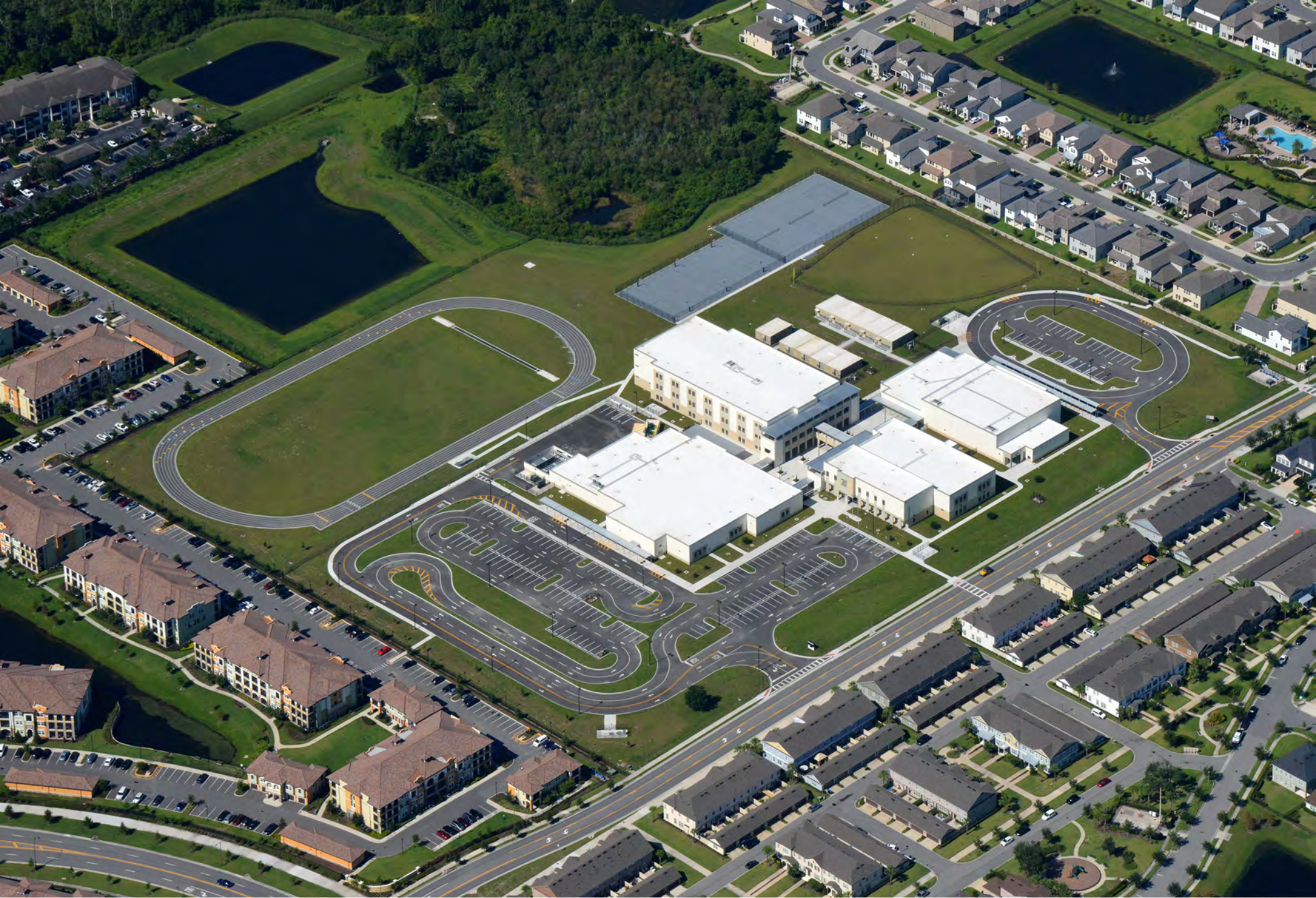
727.520.8181
www.aerophoto.com

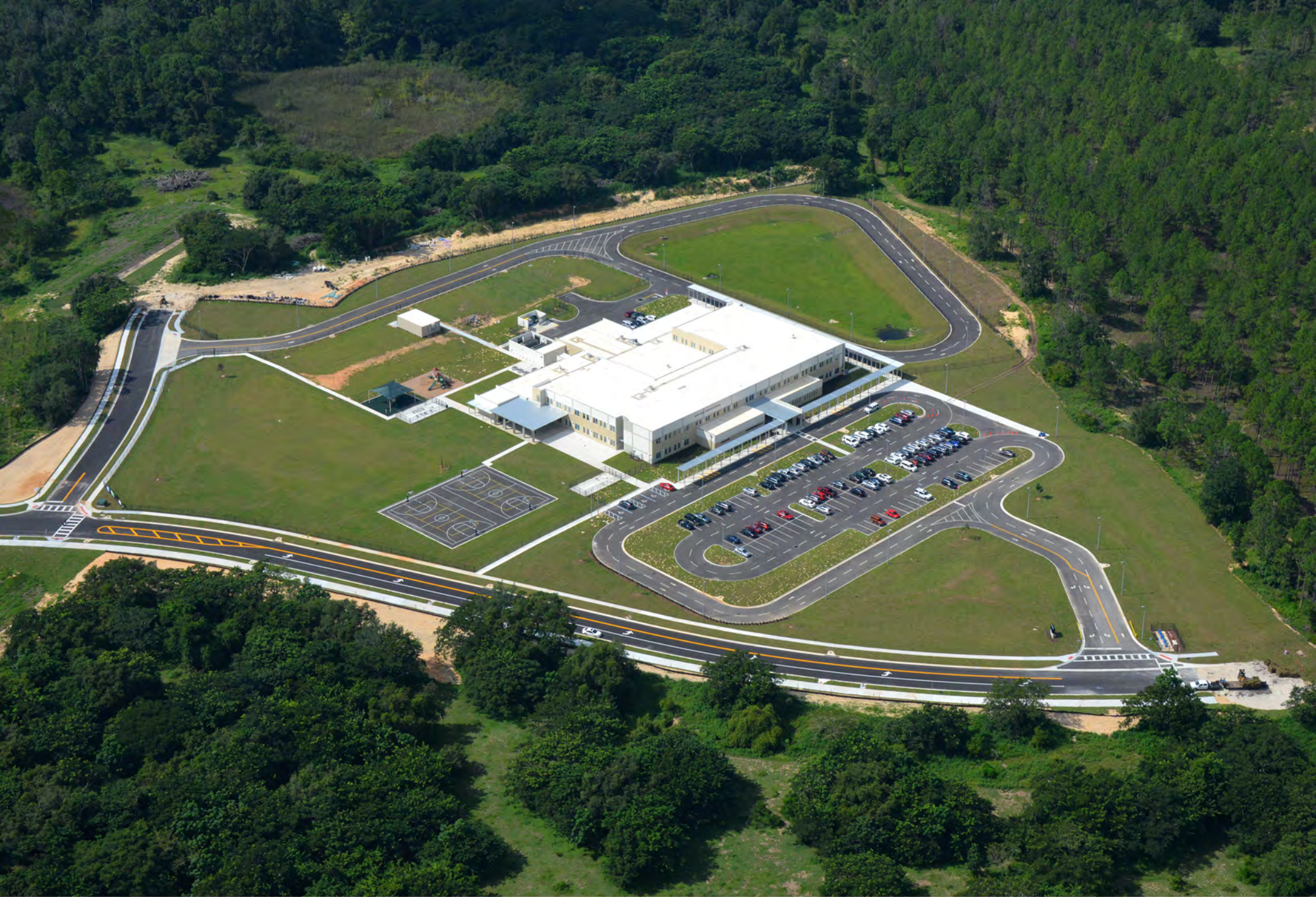
Pershing K8 School

Page 26 of 77

Image # 51

Date 06.25.19





727.520.8181
www.aerophoto.com

Water Spring Elementary School

Page 28 of 77

Image # 55
Date 08.12.19





SUNRISE ELEMENTARY SCHOOL
PROJECT #18-01-005

07.01.19 Page 30 of 77





COLONIAL HIGH SCHOOL
AUDITORIUM
08.16.19





Lake Gem Elementary School
Page 32 of 77 OCPS Project : C0099



07-23-19

**Office of Business Opportunity
MWBE/LDB/VE FY19 Q4 Report
September 10, 2019**

Background

Per district procedures, the Office of Business Opportunity is required to provide a quarterly report of participation for minority- and woman-owned business enterprises (MWBEs), local developing businesses (LDBs), and veteran-owned enterprises (VBEs). To this end, the minority and women-owned business enterprise (MWBE) participation percentages for construction and professional services through the fourth quarter of Fiscal Year 2019 are below. This report will be presented to and reviewed by COVE at the September 19, 2019 meeting.

Participation Data

Data regarding sub-contractor participation for Construction and Professional Services is based on the contracts awarded to the sub-contract as a percentage of the total contract value as of the specified date. The participation percentage for construction and professional services represents the following calculation:

$$\frac{\text{Total dollars **contracted** by prime contractors with the MWBE sub-contractors}}{\text{Total dollars **contracted** by OCPS with the prime contractors}}$$

<u>Category</u>	<u>Board Policy</u>	<u>FY19Q4</u>
Construction	23%	25%
Professional Services	15%	16%

Outreach

In support of the district's goal of Sustained Community Engagement, the Office of Business Opportunity (OBO) hosted and/or attended over 85 outreach events during Fiscal Year 2019 (FY2019). Outreach events provide meaningful interactions for members of the business community to network and gain additional information and insight on how to do business with the school district. In addition, the events allow OBO staff to share information about the district programs aimed at increasing purchasing with MWBE, LDB, and Veteran-Owned Business enterprises (VBE).

Fiscal Year 18-19 Fourth Quarter Outreach Events Fourth Quarter

April

- April 4, 2019 - OHL/Albu – Subcontractor & Vendor Outreach Event
- April 6, 2019 - What's the SCORE? OCPS Opportunities
- April 11, 2019 - Community Center Advisory Committee
- April 15, 2019 - Orange County Government – Construction Manager at Risk, Pre-Solicitation Informational Session
- April 16, 2019 - WBENC – Orlando Opportunities Event
- April 17, 2019 - BBIF – Smart Growth - Business Development Center
- April 24, 2019 - Office of Business Opportunity – 2019 Trade Fair Champions – Kick-Off Meeting
- April 25, 2019 - SCORE – Coffee with a Leader – OCPS Office of Business Opportunity
- April 26, 2019 - OCPS – Doing Business with OCPS Workshop
- April 26, 2019 - FSMDC – Certification Committee Meeting

May

- May 1, 2019 - UCF – Veteran Business Pitch Day 2019
- May 2, 2019 - PTAC – Government Contracting Reverse Trade Show 2019

May 10, 2019 - Moffitt Cancer Center – Supplier Diversity Day
May 15, 2019 - Puerto Rican Summit – Empowering Woman for Success Forum
May 22-23, 2019 - HCCMO – Hispanic Business Conference
May 24, 2019 - OCPS – Doing Business with OCPS Workshop
May 28 2019 - FSMSDC – Certification Committee Meeting
May 29-31, 2019 - Florida Sterling 27th Annual Conference

June

June 6, 2019 - Pace Center for Girls – Believing in Girls Benefit Breakfast
June 7, 2019 - OCPS Annual Trade Fair & Workshop for Small, Minority & Veteran Owned Businesses
June 11, 2019 - Mentor/Protégé Bid Panel Wyndham Destination Program
June 19, 2019 - Orlando Mayor Buddy Dyer – How to Become a City of Orlando Minority & Women-Owned Business Certified
June 27, 2019 - OCPS – Doing Business with OCPS Workshop

Local Developing Business (LDB)

The Local Developing-Business program is the district's race neutral small business program. This program intends to support local small businesses (as defined by net profit and personal net worth limitations). These small businesses must be located locally within the Orlando Statistical Metropolitan area (Orange, Osceola, Lake, and Seminole Counties). The district has an overall goal of spending 10% with local developing businesses. Currently, the district has sub-contracted 5.4%% LDB participation in construction and and 8.5% for professional services.

Veteran Business Enterprise (VBE)

The district implemented its Veteran Business Enterprise program in Fiscal Year 2016. The language encouraging participation was added to all procurement solicitation documents. In addition, vendors submitting proposals that included VBE sub-contractors/consultants on their team were awarded points in the selection process. The district has awarded several contracts directly to VBEs, including RL Burns, Blue Cord, Eagle 6 (IT) and several other VBEs. The district has received an overwhelmingly positive response from the Veteran community for its VBE program.

District programs (MWBE, LDB, and VBE) support the district's goals of operational efficiency by increasing competition; and sustained community engagement by ensuring the inclusion of small businesses in the procurement process.

MWBE/LDB/VE Quarterly Report
Facilities Leadership Team at the district's Annual Trade Show for Small Businesses



Change Orders Report

Facilities & Construction Contracting
April 2019

Sally Ride ES	ODP reconciliation for comprehensive project.	Charles Perry Construction, Inc.	Agreement No. 16CM07SCONCHARLES for Construction Management Services RFQ No. 16CM07	Change Order No. 06 to GMP AM 03	\$312,258	Behalf of John T. Morris, Chief Facilities Officer	4/11/19
------------------	--	--	---	--	-----------	---	---------

There are no significant amendments to report for the month of April 2019.

Change Orders Report

Facilities & Construction Contracting May 2019

Colonial HS	Reconciliation of CCD 01 (\$193,296.66) for soil removal from the bottom of new storm system piping, replacing with filter cloth wrapped import sand and filter fabric (owner request), and CCD 02 (\$39,813.05) for concrete revisions, storm drains reconfiguration, additional concrete demolition, related material (unforeseen condition) and 115 days time extension due to concrete aging and unsuitable soil for demolition and construction of new athletic track and select site renovations, capital renewal project.	Gilbane Building Company	Agreement No. 14CM17SCON001GILBANE for Construction Management Services RFQ No. 14CM17	Change Order No. 02 to GMP AM 01	\$222,594	Board / John T. Morris, Chief Facilities Officer	5/2/19
----------------	--	--------------------------------	--	--	-----------	---	--------

There are no significant amendments to report for the month of May 2019.

Change Orders Report

Facilities & Construction Contracting June 2019

Corner Lake MS	Installation of distributed antenna system components and 35 days time extension for comprehensive project.	Wharton-Smith, Inc.	Agreement No. 16CM14SCONWHARTON for Construction Management Services RFQ No. 16CM14	Change Order No. 04 to GMP AM 01	\$325,373	Board / John T. Morris, Chief Facilities Officer	6/13/19
Horizon West MS 37-M-SW-4	Installation of distributed antenna system components and 74 days time extension for prototype new school relief project.	Wharton-Smith, Inc.	Agreement No. 16CM29SCONWHARTON for Construction Management Services RFQ No. 16CM29	Change Order No. 06 to GMP AM 01	\$239,887	Board / John T. Morris, Chief Facilities Officer	6/13/19
Lake Gem ES	Installation of distributed antenna system components and 34 days time extension for comprehensive project.	Wharton-Smith, Inc.	Agreement No. 17CM04SCONWHARTON for Construction Management Services RFQ No. 17CM04	Change Order No. 04 to GMP AM 01	\$258,560	Board / John T. Morris, Chief Facilities Officer	6/13/19
Lake George ES	Installation of all distributed antenna system components and 59-calendar days extension for comprehensive project.	Core Construction Services of Florida, LLC	Agreement No. 17CM05SCON001CORE for Construction Management Services RFQ No. 17CM05	Change Order No. 04 to GMP AM 01	\$244,675	Board / John T. Morris, Chief Facilities Officer	6/20/19
Pine Hills Bus Depot	Reconciliation of CCD 03 (\$390,943.31) for unsuitable material excavation for Phase 1B (construction of administration building) CCD 04 (\$240,718.18) for removal of unsuitable material for Phase 1A (bus parking area), unilateral 20 days and 10 days time extension respectively due to contractor failure to unequivocally demonstrate unsuitable material found to be an owner caused impact for comprehensive project.	Ajax Building Corporation	Agreement No. 1510DBSCONAJAX for Construction Management Services RFQ No. 1510DB	Change Order No. 05 to GMP AM 02	\$1,008,606	Board / John T. Morris, Chief Facilities Officer	6/13/19
Sunrise ES	Installation of all distributed antenna system components and 59 days time extension for comprehensive project.	Core Construction Services of Florida, LLC	Agreement No. 17CM05SCON002CORE for Construction Management Services RFQ No. 17CM05	Change Order No. 04 to GMP AM 01	\$233,359	Board / John T. Morris, Chief Facilities Officer	6/20/19

There are no significant amendments to report for the month of June 2019.

Change Orders Report

Facilities & Construction Contracting
July 2019

There are no significant change orders or amendments to report for the month of July 2019.

Facilities & Construction Contracting

COVE Report for April 2019

CONTRACTS AMENDED							
ITEM NO	SCHOOL	CHANGE FOR REASON	NAME OF FIRM	DESCRIPTION OF SERVICES	AMENDMENT	APPROVAL REQUIRED	CPSC DATE
1	Boone HS	Additional design services for code complaint implementation of radio enhancement distributed antenna system for new school replacement project. (Est. Constr. Cost \$65,000.00)	Schenkel & Shultz, Inc.	DCD No. 02 to Agreement No. 17RU14SCONSCHENKEL for Architectural & Engineering Services RFQ No. 17RU14	\$10,968	Sr. Construction Director	4/25/19
2	Colonial HS	Additional design services for code compliant implementation of radio enhancement distributed antenna system for onsite replacement project. (Est. Constr. Cost \$65,000.00)	Schenkel & Shultz, Inc.	DCD No. 03 to Agreement No. 17RU16SCONSCHENKEL for Architectural & Engineering Services RFQ No. 17RU16	\$10,968	Sr. Construction Director	4/25/19
3	Deerwood ES Replacement	Additional design services for code compliant implementation of radio enhancement distributed antenna system for prototype new school replacement project. (Est. Constr. Cost \$300,000.00)	Schenkel & Shultz, Inc.	DCD No. 03 to Agreement No. 17RU09SCONSCHENKEL for Architectural & Engineering Services RFQ No. 17RU09	\$17,246	Sr. Construction Director	4/25/19
4	District-Wide	Staffing schedule modifications to add additional subconsultants for continuing contract.	Matern Professional Engineering, Inc.	Amendment No. 04 to Agreement No. 1514CCONMATERN for Mechanical, Electrical & Plumbing Engineering Services RFQ No.1514PS	\$0	Sr. Construction Director	4/4/19
5	Elementary School Site 83-E-SE-3	Contract modification to update site property identification number from 83-E-SE-2 to 83-E-SE-3 for real property project.	Hanlex Civil, LLC	Amendment No. 01 to Work Authorization No. 1515156 for Civil Engineering Services RFQ No. 1515PS	\$0	Director, Real Estate Management	4/25/19
6	Elementary School Site 83-E-SE-3	Topographic survey for a new sidewalk for prototype new school relief project.	Leading Edge Land Services, Inc.	Amendment No. 03 to Work Authorization No. 1523062 for Surveying Services RFQ No. 1523PS	\$1,126	Sr. Facilities Executive Director	4/25/19

Facilities & Construction Contracting

COVE Report for April 2019

CONTRACTS AMENDED							
ITEM NO	SCHOOL	CHANGE FOR REASON	NAME OF FIRM	DESCRIPTION OF SERVICES	AMENDMENT	APPROVAL REQUIRED	CPSC DATE
7	Elementary School Site 85-E-W-4	Additional design services for code compliant implementation of radio enhancement distributed antenna system for prototype new school relief project. (Est. Constr. Cost \$300,000.00)	Rhodes & Brito Architects, Inc.	DCD No. 01 to Agreement No. 18RU19SCONRHODES for Architectural & Engineering Services RFQ No. 18RU19	\$19,354	Sr. Facilities Executive Director	4/25/19
8	Elementary School Site 83-E-SE-3	Design services to rotate orientation of building to face Market Place Drive to comply with City of Orlando for new school relief project.	Rhodes & Brito Architects, Inc.	DCD No. 01 to Agreement No. 18RU21SCONRHODES for Architectural & Engineering Services RFQ No. 18RU21	\$33,656	Sr. Facilities Executive Director	4/4/19
9	Elementary School Site 49-E-W-4	Additional design services for code compliant implementation of radio enhancement distributed antenna system for prototype new school relief project. (Est. Constr. Cost \$300,000.00)	Schenkel & Shultz, Inc.	DCD No. 02 to Agreement No. 17RU15SCONSCHENKEL for Architectural & Engineering Services RFQ No. 17RU15	\$21,824	Sr. Construction Director	4/25/19
10	Elementary School Site 25-E-SW-4	Additional design services for code compliant implementation of radio enhancement distributed antenna system for prototype new school relief project.	BRPH Architects-Engineers, Inc.	DCD No. 03 to Agreement No. 17RU08SCONBRPH for Architectural & Engineering Services RFQ No. 17RU08	\$23,054	Sr. Facilities Executive Director	4/25/19
11	Elementary School Site 20-E-SW-4	Additional design services for code compliant implementation of radio enhancement distributed antenna system for prototype new school relief project. (Est. Constr. Cost \$300,000.00)	Rhodes & Brito Architects, Inc.	DCD No. 01 to Agreement No. 18RU02SCONRHODES for Architectural & Engineering Services RFQ No. 18RU02	\$19,354	Sr. Facilities Executive Director	4/25/19

Facilities & Construction Contracting

COVE Report for April 2019

CONTRACTS AMENDED							
ITEM NO	SCHOOL	CHANGE FOR REASON	NAME OF FIRM	DESCRIPTION OF SERVICES	AMENDMENT	APPROVAL REQUIRED	CPSC DATE
12	Exceptional Student Education Campus Consolidation 300-SS-NW-5	Additional environmental services for gopher tortoise surveying, permitting, and relocation for comprehensive project. (Est. Constr. Cost \$36,000,000.00)	Professional Service Industries, Inc.	Amendment No. 01 to Work Authorization No. 1517149 for Geotechnical & Environmental Services RFQ No. 1517PS	\$14,277	Sr. Facilities Executive Director	4/4/19
13	Exceptional Student Education Campus Consolidation 300-SS-NW-5	Additional design services for code compliant implementation of radio enhancement distributed antenna system for on-site replacement project. (Est. Constr. Cost \$600,000.00)	Harvard Jolly, Inc.	DCD No. 01 to Agreement No. 1801SCONHARVARD for Architectural & Engineering Services RFQ No. 1801PS	\$40,000	Sr. Facilities Executive Director	4/25/19
14	High School Site 113- H-W-4	Tree survey and subsurface utility engineering support services for prototype new school relief project.	Southeastern Surveying & Mapping Corporation	Amendment No. 03 to Work Authorization No. 1523050 for Surveying Services RFQ No. 1523PS	\$13,003	Sr. Construction Director	4/25/19
15	High School Site 113- H-W-4	Additional design services for traffic signal at the main entrance and associated turning lane improvements for prototype new school relief project.	Schenkel & Shultz, Inc.	Amendment No. 01 to Agreement No. 18RU23SCONSCHENKEL for Architectural & Engineering Services RFQ No. 18RU23	\$74,462	Superintendent / John T. Morris, Chief Facilities Officer	4/3/19
16	High School Site 80- H-SW-4	Additional design services for code compliant implementation of radio enhancement distributed antenna system for prototype new school relief project. (Est. Constr. Cost \$1,000,000.00)	Schenkel & Shultz, Inc.	DCD No. 01 to Agreement No. 18RU22SCONSCHENKEL for Architectural & Engineering Services RFQ No. 18RU22	\$25,877	Sr. Facilities Executive Director	4/25/19
17	Lake Gem ES	Additional design services for code compliant implementation of radio enhancement distributed antenna system for comprehensive project. (Est. Constr. Cost \$300,000.00)	Hunton Brady Architects, P.A.	DCD No. 02 to Agreement No. 1701SCON003HUNTON for Architectural & Engineering Services RFQ No. 1701PS	\$20,000	Sr. Facilities Executive Director	4/25/19

Facilities & Construction Contracting

COVE Report for April 2019

CONTRACTS AMENDED							
ITEM NO	SCHOOL	CHANGE FOR REASON	NAME OF FIRM	DESCRIPTION OF SERVICES	AMENDMENT	APPROVAL REQUIRED	CPSC DATE
18	Meadow Woods MS	Additional design services for code compliant implementation of radio enhancement distributed antenna system for comprehensive project. (Est. Constr. Cost \$560,000.00)	C. T. Hsu & Associates, P.A.	DCD No. 01 to Agreement No. 1811SCONCTHSU for Architectural & Engineering Services RFQ No. 1811PS	\$29,850	Sr. Facilities Executive Director	4/25/19
19	Middle School Site 129-M-SE-2	Additional due diligence boundary and topographic surveying for the purpose of acquisition for real property project.	Leading Edge Land Services, Inc.	Amendment No. 01 to Work Authorization No. 1523069 for Surveying Services RFQ No. 1523PS	\$22,315	Sr. Facilities Executive Director	4/25/19
20	Middle School Site 129-M-SE-2	Additional preliminary geotechnical exploration of greenfield site for real property project.	Professional Service Industries, Inc.	Amendment No. 01 to Work Authorization No. 1517189 for Geotechnical & Environmental Services RFQ No. 1517PS	\$5,613	Director, Real Estate Management	4/25/19
21	Pinar ES	Additional design services for code compliant implementation of radio enhancement distributed antenna system for onsite replacement project. (Est. Constr. Cost \$300,000.00)	Schenkel & Shultz, Inc.	DCD No. 01 to Agreement No. 18RU04SCONSCHENKEL for Architectural & Engineering Services RFQ No. 18RU04	\$21,924	Sr. Construction Director	4/25/19
22	Pine Hills ES Replacement	Additional surveying required for legal description and sketch to capture existing transformer easement for new school replacement project.	Leading Edge Land Services, Inc.	Amendment No. 01 to Work Authorization No. 1523077 for Surveying Services RFQ No. 1523PS	\$1,504	Sr. Facilities Executive Director	4/25/19

Facilities & Construction Contracting

COVE Report for April 2019

CONTRACTS AMENDED							
ITEM NO	SCHOOL	CHANGE FOR REASON	NAME OF FIRM	DESCRIPTION OF SERVICES	AMENDMENT	APPROVAL REQUIRED	CPSC DATE
23	Rolling Hills ES Replacement	Additional design services for code compliant implementation of radio enhancement distributed antenna system for prototype new school relief project. (Est. Constr. Cost \$300,000.00)	Zyscovich, Inc.	DCD No. 01 to Agreement No. 18RU07SCONZYSKOVICH for Architectural & Engineering Services RFQ No. 18RU07	\$20,000	Sr. Facilities Executive Director	4/25/19
24	Sunrise ES	Additional design services for code compliant implementation of radio enhancement distributed antenna system for comprehensive project. (Est. Constr. Cost \$300,000.00)	Hunton Brady Architects, P.A.	DCD No. 02 to Agreement No. 1701SCON002HUNTON for Architectural & Engineering Services RFQ No. 1701PS	\$20,000	Sr. Facilities Executive Director	4/25/19
25	Winegard ES Replacement	Additional design services for code compliant implementation of radio enhancement distributed antenna system for prototype new school replacement project. (Est. Constr. Cost \$300,000.00)	Schenkel & Shultz, Inc.	DCD No. 01 to Agreement No. 18RU08SCONSCHENKEL for Architectural & Engineering Services RFQ No. 18RU08	\$17,246	Sr. Construction Director	4/25/19

*Not Funded by Sales Tax or Capital Renewal

Facilities & Construction Contracting

COVE Report for April 2019

CHANGE ORDERS APPROVED								
ITEM NO	SCHOOL	REASON FOR CHANGE	NAME OF FIRM	DESCRIPTION OF SERVICES	DOC #	C.O. AMOUNT	APPROVAL REQUIRED	CPSC DATE
1	Audubon Park K-8 133- K8-N-6	Final reconciliation for prototype new school relief project.	Welbro Building Corporation, Inc.	Agreement No. 14CM33SCONWELBRO for Construction Management Services RFQ No. 14CM33	Change Order No. 05 to GMP AM 05	(\$319,027)	John T. Morris, Chief Facilities Officer	4/18/19
2	College Park MS	Credit to remove work relative to Classroom 3 with the exception of roof access ladder due to unforeseen conditions of existing structure for new roof systems and gymnasium roof top units replacement for capital renewal project.	Clancy & Theys Construction Co.	Work Authorization No. 12CM14050B for Construction Management Services RFQ No. 12CM14	Change Order No. 02	(\$85,701)	Superintendent / John T. Morris, Chief Facilities Officer	4/11/19
3	Elementary School Site 25-E-SW-4	Tot lot shade structure, covered play fans and electric water cooler with bottle filler for prototype new school relief project.	Charles Perry Construction, Inc.	Agreement No. 17CM07SCONCHARLES for Construction Management Services RFQ No. 17CM07	CCD No. 02 to GMP AM 01	\$47,336	John T. Morris, Chief Facilities Officer	4/25/19
4	Elementary School Site 25-E-SW-4	Revision of civil scope to comply with Orange County Public Works review and additional 28 days' extension for onsite supervision for new school relief project.	Charles Perry Construction, Inc.	Agreement No. 17CM07SCONCHARLES for Construction Management Services RFQ No. 17CM07	Change Order No. 02 to GMP AM 01	\$81,278	Superintendent / John T. Morris, Chief Facilities Officer	4/4/19
5	Lake Como K-8 School 205-K8-SW-6	Final GMP reconciliation for prototype replacement school project.	Williams Company Building Division, Inc.	Agreement No. 16CM08SCONWILLIAMS for Construction Management Services RFQ No. 16CM08	Change Order No. 05 to GMP AM 02	(\$1,244,261)	John T. Morris, Chief Facilities Officer	4/25/19
6	Maxey ES 207-E-W-7	Final GMP reconciliation for comprehensive project.	Clancy & Theys Construction Co.	Agreement No. 16CM23SCONCLANCY for Construction Management Services RFQ No. 16CM23	Change Order No. 07 to GMP AM 02	(\$271,741)	John T. Morris, Chief Facilities Officer	4/4/19

Facilities & Construction Contracting

COVE Report for April 2019

CHANGE ORDERS APPROVED								
ITEM NO	SCHOOL	REASON FOR CHANGE	NAME OF FIRM	DESCRIPTION OF SERVICES	DOC #	C.O. AMOUNT	APPROVAL REQUIRED	CPSC DATE
7	Undetermined Site 514-U-SW-5	GMP reconciliation for demolition of existing buildings with Administration building remaining at Old Catalina ES for district capital project.	Wharton-Smith, Inc.	Work Authorization No. 12CM14059B for Construction Management Services RFQ No. 12CM14	Change Order No. 02	(\$28,840)	John T. Morris, Chief Facilities Officer	4/25/19
8	Various Schools Rubberized Track Program	Time extension of (18) eighteen days to accommodate for the soccer season for capital project.	Wharton-Smith, Inc.	Work Authorization No. 12CM14065B for Construction Management Services RFQ No. 12CM14	Change Order No. 03	\$0	Sr. Facilities Manager, District Wide/Portable Operations	4/4/19
TRANSACTIONAL CHANGE ORDERS								
ITEM NO	SCHOOL	REASON FOR CHANGE	NAME OF FIRM	DESCRIPTION OF SERVICES	DOC #	C.O. AMOUNT	APPROVAL REQUIRED	CPSC DATE
9	Boone HS	Estimated ODP for Building 500 HVAC replacement, capital renewal project.	Williams Company Building Division, Inc.	Agreement No. 14CM06SCON002WILLIAMS for Construction Management Services RFQ No. 14CM06	Change Order No. 01 to GMP AM 04	(\$30,000)	Behalf of John T. Morris, Chief Facilities Officer	4/25/19
10	Dover Shores ES	Final ODP reconciliation for comprehensive project.	Charles Perry Construction, Inc.	Agreement No. 15CM19SCON001CHARLES for Construction Management Services RFQ No. 15CM19	Change Order No. 04 to GMP AM 02	\$5,221	Behalf of John T. Morris, Chief Facilities Officer	4/11/19
11	Facilities Building 100A	Estimated ODP for HVAC system replacement/upgrade life safety project.	Clancy & Theys Construction Co.	Work Authorization No. 12CM14068C for Construction Management Services RFQ No. 12CM14	Change Order No. 02	(\$33,794)	John T. Morris, Chief Facilities Officer	4/25/19
12	Gotha MS	Estimated ODP for building systems renovation, capital renewal project.	Gilbane Building Company	Agreement No. 14CM16SCON002GILBANE for Construction Management Services RFQ No. 14CM16	Change Order No. 01 to GMP AM 02	(\$1,420,776)	Behalf of John T. Morris, Chief Facilities Officer	4/18/19
13	Hidden Oaks ES Replacement	Final ODP reconciliation for new school replacement project.	Core Construction Services of Florida, LLC	Agreement No. 16CM24SCONCORE for Construction Management Services RFQ No. 16CM24	Change Order No. 05 to GMP AM 01	\$21,816	Sr. Construction Director	4/4/19

Facilities & Construction Contracting

COVE Report for April 2019

TRANSACTIONAL CHANGE ORDERS								
ITEM NO	SCHOOL	REASON FOR CHANGE	NAME OF FIRM	DESCRIPTION OF SERVICES	DOC #	C.O. AMOUNT	APPROVAL REQUIRED	CPSC DATE
14	Olympia HS	Estimated ODP for building systems and low-voltage system renovations for capital renewal project.	Gilbane Building Company	Agreement No. 14CM16SCON001GILBANE for Construction Management Services RFQ No. 14CM16	Change Order No. CO 01 to GMP 03	(\$2,144,835)	Behalf of John T. Morris, Chief Facilities Officer	4/4/19
15	Pine Hills Bus Depot	Estimated deductive ODP for comprehensive project.	Ajax Building Corporation	Agreement No. 1510DBSCONAJAX for Design Build Services RFQ No. 1510DB	Change Order No. 04 to GMP AM 02	(\$376,377)	Behalf of John T. Morris, Chief Facilities Officer	4/4/19
16	Sally Ride ES	ODP reconciliation for comprehensive project.	Charles Perry Construction, Inc.	Agreement No. 16CM07SCONCHARLES for Construction Management Services RFQ No. 16CM07	Change Order No. 06 to GMP AM 03	\$312,258	Behalf of John T. Morris, Chief Facilities Officer	4/11/19
17	Southwest MS	Initial ODP for comprehensive project.	Walker & Company, Inc.	Agreement No. 17CM13SCONWALKER for Construction Management Services RFQ No. 17CM13	Change Order No. 01 to GMP AM 01	(\$2,918,793)	Behalf of John T. Morris, Chief Facilities Officer	4/4/19
18	Southwood ES	Estimated ODP for existing building systems renovations, capital renewal project.	R. L. Burns, Inc.	Work Authorization No. 12CM14040B for Construction Management Services RFQ No. 12CM14	Change Order No. 01	(\$95,000)	Behalf of John T. Morris, Chief Facilities Officer	4/25/19

*** Not Funded by Sales Tax or Capital Renewal**

Facilities & Construction Contracting

COVE Report for May 2019

CONTRACTS AMENDED							
ITEM NO	SCHOOL	REASON FOR CHANGE	NAME OF FIRM	DESCRIPTION OF SERVICES	AMENDMENT	APPROVAL REQUIRED	CPSC DATE
1	Acceleration West	Additional design services for code compliant implementation of radio enhancement distributed antenna system for renovation and select remodeling of existing building systems for comprehensive project. (Est. Constr. Cost \$300,000.00)	BRPH Architects-Engineers, Inc.	DCD No. 01 to Agreement No. 1815SCONBRPH for Architectural & Engineering Services RFQ No. 1815PS	\$30,000	Sr. Facilities Executive Director	5/2/19
2	Deerwood ES Replacement	Additional construction material testing services for prototype new school replacement project.	Universal Engineering Sciences, Inc.	Amendment No. 01 to Work Authorization No. 1517150 for Construction Material Testing Services RFQ No. 1517PS	\$5,461	Sr. Construction Director	5/16/19
3	Discovery MS	Additional design services for construction documents revisions to HVAC system design modifications to consolidate the air handlers in buildings 2 and 3 for select building systems renovation, capital renewal bundle project. (Est. Constr. Cost \$2,618,860.00)	Rhodes & Brito Architects, Inc.	DCD No. 02 to Agreement No. 1411SCON002RHODES for Architectural & Engineering Services RFQ No. 1411PS	\$56,363	Superintendent / John T. Morris, Chief Facilities Officer	5/2/19
4	District-Wide	Staffing schedule modification to add subconsultant for continuing contract.	OCI Associates, Inc.	Amendment No. 02 to Agreement No. 1514CCONOCI for Mechanical, Electrical & Plumbing Engineering Services RFQ No. 1514PS	\$0	Sr. Construction Director	5/30/19
5	District-Wide	Staffing schedule modification to add subconsultant for continuing contract.	Bobes Associates Consulting Engineers, Inc.	Amendment No. 02 to Agreement No. 1514CCONBOBES for Mechanical, Electrical & Plumbing Engineering Services RFQ No. 1514PS	\$0	Sr. Construction Director	5/30/19
6	District-Wide	Staffing schedule modification for continuing contract.	R. L. Burns, Inc.	Amendment No. 09 to Agreement No. 12CM14CCONRLBURNS for Construction Management Services RFQ No. 12CM14	\$0	Sr. Facilities Executive Director	5/9/19

Facilities & Construction Contracting

COVE Report for May 2019

CONTRACTS AMENDED							
ITEM NO	SCHOOL	REASON FOR CHANGE	NAME OF FIRM	DESCRIPTION OF SERVICES	AMENDMENT	APPROVAL REQUIRED	CPS DATE
7	Elementary School Site 118-E-SW-5	Additional preliminary geotechnical exploration of greenfield site for real property project.	Universal Engineering Sciences, Inc.	Amendment No. 01 to Work Authorization No. 1517211 for Geotechnical & Environmental Services RFQ No. 1517PS	\$4,681	Director, Real Estate Management	5/23/19
8	Elementary School Site 83-E-SE-3	Additional design services for code compliant implementation of radio enhancement distributed antenna system for prototype new school relief project. (Est. Constr. Cost \$300,000.00)	Rhodes & Brito Architects, Inc.	DCD No. 02 to Agreement No. 18RU21SCONRHODES for Architectural & Engineering Services RFQ No. 18RU21	\$19,354	Sr. Facilities Executive Director	5/2/19
9	Exceptional Student Education Campus Consolidation 300-SS-NW-5	Additional surveying for emergency access road easement for existing Magnolia School replacement and new behavior center facility for comprehensive project.	Southeastern Surveying & Mapping Corporation	Amendment No. 01 to Work Authorization No. 1523036 for Surveying Services RFQ No. 1523PS	\$1,595	Sr. Construction Director	5/16/19
10	High School Site 80-H-SW-4	Additional environmental services for gopher tortoises surveying, permitting and relocation for prototype new school relief project.	Terracon Consultants, Inc.	Amendment No. 02 to Work Authorization No. 1517181 for Geotechnical & Environmental Services RFQ No. 1517PS	\$76,597	Superintendent / John T. Morris, Chief Facilities Officer	5/30/19
11	High School Site 113-H-W-4	Additional geotechnical borings at recommended depths for prototype new school relief project.	Universal Engineering Sciences, Inc.	Amendment No. 01 to Work Authorization No. 1517194 for Geotechnical & Environmental Services RFQ No. 1517PS	\$26,148	Sr. Facilities Executive Director	5/16/19
12	High School Site 113-H-W-4	Additional design services for code compliant implementation of radio enhancement distributed antenna system for prototype new school relief project. (Est. Constr. Cost \$1,000,000.00)	Schenkel & Shultz, Inc.	DCD No. 01 to Agreement No. 18RU23SCONSCHENKEL for Architectural & Engineering Services RFQ No. 18RU23	\$25,877	Sr. Facilities Executive Director	5/2/19
13	Kaley ES	Additional asbestos air monitoring and ambient air sampling prior to demolition for portable project.	EE&G Environmental Services, LLC	Amendment No. 01 to Work Authorization No. 1717046 for Environmental Consulting Services RFQ No. 1717PS	\$1,317	Sr. Facilities Manager, District Wide/Portable Operations	5/30/19

Facilities & Construction Contracting

COVE Report for May 2019

CONTRACTS AMENDED							
ITEM NO	SCHOOL	REASON FOR CHANGE	NAME OF FIRM	DESCRIPTION OF SERVICES	AMENDMENT	APPROVAL REQUIRED	CPSC DATE
14	Pinar ES	Additional services to prepare necessary documentation to obtain Environmental Resource Permit from St. Johns River Water Management for onsite replacement project.	Schenkel & Shultz, Inc.	Amendment No. 01 to Agreement No. 18RU04SCONSCHENKEL for Architectural & Engineering Services RFQ No. 18RU04	\$8,245	Sr. Facilities Executive Director	5/2/19
15	Southwest MS	Additional design services for code complaint implementation of radio enhancement distributed antenna system for comprehensive project. (Est. Constr. Cost \$560,000.00)	C. T. Hsu & Associates, P.A.	DCD No. 01 to Agreement No. 1710SCONCTHSU for Architectural & Engineering Services RFQ No. 1710PS	\$29,995	Sr. Facilities Executive Director	5/23/19
16	Technical Site 73-T- W-7	Additional ecological services which includes delineation of the jurisdictional extent of wetlands, surface for new school replacement project.	Professional Service Industries, Inc.	Amendment No. 01 to Work Authorization No. 1517195 for Geotechnical & Environmental Services RFQ No. 1517PS	\$8,613	Sr. Construction Director	5/16/19
17	Timber Springs MS 21-M-E-2	Additional design services for remedial work to correct drainage condition impacting student use of the playfields caused by unsuitable soil placement during construction for prototype new school relief project. (Est. Constr. Cost \$207,474.00)	Hunton Brady Architects, P.A.	Amendment No. 04 to Agreement No. 14RU29SCONHUNTON for Architectural & Engineering Services RFQ No. 14RU29	\$18,736	Sr. Facilities Executive Director	5/2/19

*** Not Funded by Sales Tax or Capital Renewal**

Facilities & Construction Contracting

COVE Report for May 2019

CHANGE ORDERS APPROVED								
ITEM NO	SCHOOL	REASON FOR CHANGE	NAME OF FIRM	DESCRIPTION OF SERVICES	DOC #	C.O. AMOUNT	APPROVAL REQUIRED	CPSC DATE
1	Apopka MS	Final reconciliation of all costs as per settlement agreement for storm water erosion, Hurricane Irma project.	ACY Contractors, LLC	Work Authorization No. 12CM14066B for Construction Management Services RFQ No. 12CM14	Change Order No. 02	\$12,344	John T. Morris, Chief Facilities Officer	5/16/19
2	Blankner K-8 School	Revisions to exterior paint, waterproofing, and door gaskets scope necessary based on exterior envelope assessment for select renovations, upgrade and replacement of existing building systems, capital renewal project to conclude the Summer of 2019.	Williams Company Building Division, Inc.	Agreement No. 14CM06SCON001WILLIAMS for Construction Management Services RFQ No. 14CM06	Change Order No. 03 to GMP AM 03	\$65,583	Superintendent / John T. Morris, Chief Facilities Officer	5/23/19
3	Colonial HS	Reconciliation of CCD 01 (\$193,296.66) for soil removal from the bottom of new storm system piping, replacing with filter cloth wrapped import sand and filter fabric (owner request), and CCD 02 (\$39,813.05) for concrete revisions, storm drains reconfiguration, additional concrete demolition, related material (unforeseen condition) and 115 days time extension due to concrete aging and unsuitable soil for demolition and construction of new athletic track and select site renovations, capital renewal project.	Gilbane Building Company	Agreement No. 14CM17SCON001GILBANE for Construction Management Services RFQ No. 14CM17	Change Order No. 02 to GMP AM 01	\$222,594	Board / John T. Morris, Chief Facilities Officer	5/2/19
4	Hillcrest ES	Final GMP reconciliation for comprehensive project.	Wharton-Smith, Inc.	Agreement No. 16CM12SCONWHARTON for Construction Management Services RFQ No. 16CM12	Change Order No. 10 to GMP AM 01	(\$184,663)	John T. Morris, Chief Facilities Officer	5/30/19

Facilities & Construction Contracting

COVE Report for May 2019

CHANGE ORDERS APPROVED								
ITEM NO	SCHOOL	REASON FOR CHANGE	NAME OF FIRM	DESCRIPTION OF SERVICES	DOC #	C.O. AMOUNT	APPROVAL REQUIRED	CPSC DATE
5	Jones HS	Reconciliation of CCD 02 (\$108,006.95) for site work, site utilities and electric items (traffic controls) required for permitting by the City of Orlando and 80 calendar days time extension for athletic complex improvements for district capital project.	ACY - JCB A Joint Venture, LLC	Agreement No. 14CM26SCONACY-JCB for Construction Management Services RFQ No. 14CM26	Change Order No. 05 to GMP AM 01	\$105,073	Superintendent / John T. Morris, Chief Facilities Officer	5/30/19
6	Lake George ES	Furnishing and installation of laser-optimized fiber in (six) 6 buildings to ensure proper networking backbone in each building's intermediate distribution frame room for comprehensive project.	Core Construction Services of Florida, LLC	Agreement No. 17CM05SCON001CORE for Construction Management Services RFQ No. 17CM05	Change Order No. 02 to GMP AM 01	\$22,689	Sr. Facilities Executive Director	5/2/19
7	Pershing School 208-K8-SE-3	Reconciliation of CCD 01 (\$49,824.05) to remediate the petroleum-impacted soil after removal of two (2) former on-site underground storage tanks for prototype new school replacement project.	Williams Company Building Division, Inc.	Agreement No. 16CM27SCONWILLIAMS for Construction Management Services RFQ No. 16CM27	Change Order No. 04 to GMP AM 02	\$22,888	Sr. Facilities Executive Director	5/9/19
8	Pershing School 208-K8-SE-3	Reconciliation of CCD 02 (\$147,000.00) for work associated with modifying the fire alarm system to a full voice evacuation system and 18 days time extension for prototype new school replacement project.	Williams Company Building Division, Inc.	Agreement No. 16CM27SCONWILLIAMS for Construction Management Services RFQ No. 16CM27	Change Order No. 05 to GMP AM 02	\$78,894	Superintendent / John T. Morris, Chief Facilities Officer	5/9/19
9	Pine Hills ES Replacement	Final GMP reconciliation for prototype new school replacement project.	James B. Pirtle Construction Company, Inc. d/b/a Pirtle Construction Company	Agreement No. 16CM18SCONPIRTLE for Construction Management Services RFQ No. 16CM18	Change Order No. 04 to GMP AM 01	(\$352,295)	Behalf of John T. Morris, Chief Facilities Officer	5/2/19

Facilities & Construction Contracting

COVE Report for May 2019

TRANSACTIONAL CHANGE ORDERS								
ITEM NO	SCHOOL	REASON FOR CHANGE	NAME OF FIRM	DESCRIPTION OF SERVICES	DOC #	C.O. AMOUNT	APPROVAL REQUIRED	CPSC DATE
10	Frangus ES Replacement	Final ODP reconciliation for prototype new school replacement project.	Williams Company Building Division, Inc.	Agreement No. 16CM17SCONWILLIAMS for Construction Management Services RFQ No. 16CM17	Change Order No. 03 to GMP AM 02	\$21,616	Behalf of John T. Morris, Chief Facilities Officer	5/2/19
11	Horizon West MS 37-M- SW-4	Additional estimated ODP for prototype new school relief project.	Wharton-Smith, Inc.	Agreement No. 16CM29SCONWHARTON for Construction Management Services RFQ No. 16CM29	Change Order No. 05 to GMP AM 01	(\$424,947)	Behalf of John T. Morris, Chief Facilities Officer	5/2/19
12	Lawton Chiles ES	Estimated ODP for HVAC and building envelope renovations, capital renewal project.	Wharton-Smith, Inc.	Work Authorization No. 12CM14072B for Construction Management Services RFQ No. 12CM14	Change Order No. 01	(\$150,500)	Behalf of John T. Morris, Chief Facilities Officer	5/2/19
13	Maxey ES Site 207-E-W-7	ODP reconciliation for prototype new school replacement project.	Clancy & Theys Construction Co.	Agreement No. 16CM23SCONCLANCY for Construction Management Services RFQ No. 16CM23	Change Order No. 06 to GMP AM 01	\$143,707	John T. Morris, Chief Facilities Officer	5/16/19
14	Northlake Park Community ES	Estimated ODP for Building 200 HVAC, expired systems replacement and upgrade, capital renewal project	R. L. Burns, Inc.	Work Authorization No. 12CM14069B for Construction Management Services RFQ No. 12CM14	Change Order No. 01	(\$134,873)	Behalf of John T. Morris, Chief Facilities Officer	5/2/19
15	Oakshire ES & Pinewood ES	Estimated ODP for existing central energy plant and HVAC components replacement, capital renewal project	Johnson-Laux Construction, LLC	Agreement No. 17CM03SCONJOHNSON for Construction Management Services RFQ No. 17CM03	Change Order No. 01 to GMP AM 02	(\$773,161)	Behalf of John T. Morris, Chief Facilities Officer	5/2/19
16	Ocoee MS	Estimated ODP for gymnasium renovation, select existing building systems, capital renewal project.	Wharton-Smith, Inc.	Agreement No. 14CM22SCON001WHARTON for Construction Management Services RFQ No. 14CM22	Change Order No. 01 to GMP AM 02	(\$634,444)	John T. Morris, Chief Facilities Officer	5/16/19

***Not Funded by Sales Tax or Capital Renewal**

Facilities & Construction Contracting

COVE Report for June 2019

CONTRACTS AMENDED							
ITEM NO	SCHOOL	REASON FOR CHANGE	NAME OF FIRM	DESCRIPTION OF SERVICES	AMENDMENT	APPROVAL REQUIRED	CPSC DATE
1	Acceleration West	Additional sampling of caulking on portables for comprehensive project.	Terracon Consultants, Inc.	Amendment No. 01 to Work Authorization No. 1717026 for Environmental Consulting Services RFQ No. 1717PS	\$753	Sr. Construction Director	6/6/19
2	Corner Lake MS	Additional design services for code Complaint implementation of radio enhancement distributed antenna system for comprehensive project. (Est. Constr. Cost \$560,000.00)	C. T. Hsu & Associates, P.A.	DCD No. 02 to Agreement No. 1613SCONCTHSU for Architectural & Engineering Services RFQ No. 1613PS	\$29,850	Sr. Facilities Executive Director	6/13/19
3	District-Wide	Staffing schedule modification for continuing contract.	Wharton-Smith, Inc.	Amendment No. 09 to Agreement No. 12CM14CCONWHARTON for Construction Management Services RFQ No. 12CM14	\$0	Sr. Construction Director	6/6/19
4	District-Wide	Staffing plan modifications to fill vacant positions for program management support for 01/01/2019 through 12/31/2019 for program management contract.	WSP USA Inc.	Amendment No. 22 to Agreement No. 15PM05CONPARSONS for Program Management Support Services RFQ No. 15PM05	\$0	Sr. Facilities Executive Director	6/27/19
5	District-Wide	Staffing schedule modification to add subconsultant for continuing contract.	Ingenuity Engineers, Inc.	Amendment No. 02 to Agreement No. 1514CCONINGENUITY for Mechanical, Electrical & Plumbing Engineering Services RFQ No. 1514PS	\$0	Sr. Construction Director	6/20/19
6	District-Wide	Staffing plan modifications to fill vacant positions for program management support for 01/01/2019 through 12/31/2019 for program management contract.	WSP USA Inc.	Amendment No. 21 to Agreement No. 15PM05CONPARSONS for Program Management Support Services RFQ No. 15PM05	\$0	Sr. Facilities Executive Director	6/27/19

Facilities & Construction Contracting

COVE Report for June 2019

CONTRACTS AMENDED							
ITEM NO	SCHOOL	REASON FOR CHANGE	NAME OF FIRM	DESCRIPTION OF SERVICES	AMENDMENT	APPROVAL REQUIRED	CPSC DATE
7	District-Wide	Staffing plan modification to fill vacant position to support project during 01/01/2019 through 12/31/2019 for program management contract.	Cost Management, Inc. d/b/a CMI	Amendment No. 21 to Agreement No. 15PM21CONCMI for Program Management Support Services RFQ No. 15PM21	\$0	Sr. Facilities Executive Director	6/27/19
8	Elementary School Site 20-E-SW-4	Additional gopher tortoise surveying, permitting and relocation services for prototype new school relief project.	Professional Service Industries, Inc.	Amendment No. 01 to Work Authorization No. 1517198 for Geotechnical & Environmental Services RFQ No. 1517PS	\$13,396	Sr. Facilities Executive Director	6/20/19
9	Elementary School Site 20-E-SW-4	Additional design for signal control at the entrance of school for prototype new relief school project. (Est. Constr. Cost \$200,000.00)	Rhodes & Brito Architects, Inc.	Amendment No. 01 to Agreement No. 18RU02SCONRHODES for Architectural & Engineering Services RFQ No. 18RU02	\$48,819	John T. Morris, Chief Facilities Officer	6/13/19
10	Elementary School Site 85-E-W-4	Additional gopher tortoise surveying, permitting, and relocation services for prototype new school relief project.	Professional Service Industries, Inc.	Amendment No. 01 to Work Authorization No. 1517197 for Geotechnical & Environmental Services RFQ No. 1517PS	\$22,443	Sr. Construction Director	6/27/19
11	High School Site 80-H-SW-4	Additional services for design acceleration to allow for the release of an early site package to deliver in 2021 school year for prototype new school relief project. (Est. Constr. Cost \$85,000,000.00)	Schenkel & Shultz, Inc.	Amendment No. 01 to Agreement No. 18RU22SCONSCHENKEL for Architectural & Engineering Services RFQ No. 18RU22	\$32,036	Sr. Facilities Executive Director	6/13/19

Facilities & Construction Contracting

COVE Report for June 2019

CONTRACTS AMENDED							
ITEM NO	SCHOOL	REASON FOR CHANGE	NAME OF FIRM	DESCRIPTION OF SERVICES	AMENDMENT	APPROVAL REQUIRED	CPSC DATE
12	Horizon West MS Site 37- M-SW-4	Additional design services for code complaint implementation of radio enhancement distributed antenna system, prototype new school relief project. (Est. Constr. Cost \$560,000.00)	Harvard Jolly, Inc.	DCD No. 03 to Agreement No. 16RU28SCONHARVARD for Architectural & Engineering Services RFQ No. 16RU28	\$30,000	Sr. Facilities Executive Director	6/13/19
13	Lake George ES	Additional design services for code Compliant implementation of radio enhancement distributed antenna system for comprehensive project. (Est. Constr. Cost \$300,000.00)	Hunton Brady Architects, P.A.	DCD No. 02 to Agreement No. 1701SCON001HUNTON for Architectural & Engineering Services RFQ No. 1701PS	\$20,000	Sr. Facilities Executive Director	6/20/19
14	Ridgewood Park ES	Design services to revise contract documents due to structural, building interior and exterior, roofing, mechanical and technology no longer required for select building systems renovation, capital renewal project. (Est. Constr. Cost \$620,000.00)	C. T. Hsu & Associates, P.A.	Amendment No. 01 to Work Authorization No. 1301063 for Architectural & Engineering Services RFQ No. 1301PS	(\$63,004)	Superintendent / John T. Morris, Chief Facilities Officer	6/20/19

*Not Funded by Sales Tax or Capital Renewal

Facilities & Construction Contracting

COVE Report for June 2019

CHANGE ORDERS APPROVED								
ITEM NO	SCHOOL	REASON FOR CHANGE	NAME OF FIRM	DESCRIPTION OF SERVICES	DOC #	C.O. AMOUNT	APPROVAL REQUIRED	CPSC DATE
1	Castleview ES Site 25-E-SW-4	Installation of all distributed antenna system components and 57 days time extension for prototype new school relief project.	Charles Perry Construction, Inc.	Agreement No. 17CM07SCONCHARLES for Construction Management Services RFQ No. 17CM07	CCD No. 03 to GMP AM 01	\$123,747	Superintendent / John T. Morris, Chief Facilities Officer	6/6/19
2	Corner Lake MS	Installation of distributed antenna system components and 35 days time extension for comprehensive project.	Wharton-Smith, Inc.	Agreement No. 16CM14SCONWHARTON for Construction Management Services RFQ No. 16CM14	Change Order No. 04 to GMP AM 01	\$325,373	Board / John T. Morris, Chief Facilities Officer	6/13/19
3	Deerwood ES Replacement	Installation of all distributed antenna system components for prototype new school replacement project.	James B. Pirtle Construction Company, Inc. d/b/a Pirtle Construction Company	Agreement No. 17CM06SCONPIRTLE for Construction Management Services RFQ No. 17CM06	CCD No. 01 to GMP AM 01	\$112,453	Superintendent / John T. Morris, Chief Facilities Officer	6/6/19
4	Dover Shores ES	Final GMP reconciliation for comprehensive project.	Charles Perry Construction, Inc.	Agreement No. 15CM19SCON001CHARLES for Construction Management Services RFQ No. 15CM19	Change Order No. 05 to GMP AM 02	(\$60,592)	John T. Morris, Chief Facilities Officer	6/27/19
5	Horizon West MS 37-M-SW-4	Installation of distributed antenna system components and 74 days time extension for prototype new school relief project.	Wharton-Smith, Inc.	Agreement No. 16CM29SCONWHARTON for Construction Management Services RFQ No. 16CM29	Change Order No. 06 to GMP AM 01	\$239,887	Board / John T. Morris, Chief Facilities Officer	6/13/19
6	Lake Gem ES	Installation of distributed antenna system components and 34 days time extension for comprehensive project.	Wharton-Smith, Inc.	Agreement No. 17CM04SCONWHARTON for Construction Management Services RFQ No. 17CM04	Change Order No. 04 to GMP AM 01	\$258,560	Board / John T. Morris, Chief Facilities Officer	6/13/19
7	Lake Gem ES	Installation of additional fans, electrical components, plumbing fixtures, and fabric shade structure at tot lot for comprehensive project.	Wharton-Smith, Inc.	Agreement No. 17CM04SCONWHARTON for Construction Management Services RFQ No. 17CM04	Change Order No. 03 to GMP AM 01	\$47,734	John T. Morris, Chief Facilities Officer	6/27/19

Facilities & Construction Contracting

COVE Report for June 2019

CHANGE ORDERS APPROVED								
ITEM NO	SCHOOL	REASON FOR CHANGE	NAME OF FIRM	DESCRIPTION OF SERVICES	DOC #	C.O. AMOUNT	APPROVAL REQUIRED	CPSC DATE
8	Lake George ES	Installation of all distributed antenna system components and 59-calendar days extension for comprehensive project.	Core Construction Services of Florida, LLC	Agreement No. 17CM05SCON001CORE for Construction Management Services RFQ No. 17CM05	Change Order No. 04 to GMP AM 01	\$244,675	Board / John T. Morris, Chief Facilities Officer	6/20/19
9	Lake George ES	Installation of fabric structure in tot lot, industrial caged fans, and water coolers to comply with new design guidelines for comprehensive project.	Core Construction Services of Florida, LLC	Agreement No. 17CM05SCON001CORE for Construction Management Services RFQ No. 17CM05	Change Order No. 03 to GMP AM 01	\$44,794	Behalf of John T. Morris, Chief Facilities Officer	6/13/19
10	Pine Hills Bus Depot	Reconciliation of CCD 03 (\$390,943.31) for unsuitable material excavation for Phase 1B (construction of administration building) CCD 04 (\$240,718.18) for removal of unsuitable material for Phase 1A (bus parking area), unilateral 20 days and 10 days time extension respectively due to contractor failure to unequivocally demonstrate unsuitable material found to be an owner caused impact for comprehensive project.	Ajax Building Corporation	Agreement No. 1510DBSCONAJAX for Construction Management Services RFQ No. 1510DB	Change Order No. 05 to GMP AM 02	\$1,008,606	Board / John T. Morris, Chief Facilities Officer	6/13/19
11	Sunrise ES	Installation of all distributed antenna system components and 59 days time extension for comprehensive project.	Core Construction Services of Florida, LLC	Agreement No. 17CM05SCON002CORE for Construction Management Services RFQ No. 17CM05	Change Order No. 04 to GMP AM 01	\$233,359	Board / John T. Morris, Chief Facilities Officer	6/20/19
12	Washington Shores Primary Learning Center	Final GMP reconciliation for various site and building systems renovation for district capital project.	Core Construction Services of Florida, LLC	Agreement No. 16CM30SCONCORE for Construction Management Services RFQ No. 16CM30	Change Order No. 02 to GMP AM 01	(\$60,683)	John T. Morris, Chief Facilities Officer	6/13/19
13	Water Spring ES Site 49-E-W-4	Installation of all distributed antenna system components for prototype new school relief project.	Welbro Building Corporation, Inc.	Agreement No. 17CM12SCONWELBRO for Construction Management Services RFQ No. 17CM12	CCD No. 02 to GMP AM 01	\$104,802	Superintendent / John T. Morris, Chief Facilities Officer	6/6/19

Facilities & Construction Contracting

COVE Report for June 2019

CHANGE ORDERS APPROVED								
ITEM NO	SCHOOL	REASON FOR CHANGE	NAME OF FIRM	DESCRIPTION OF SERVICES	DOC #	C.O. AMOUNT	APPROVAL REQUIRED	CPSC DATE
14	Windermere HS Radio Enhancement	Use of electrical allowances (\$500,000) to incorporate the revised Contract Documents for the distributed antenna system for life safety project.	Wharton-Smith, Inc.	Work Authorization No. 12CM14075B for Construction Management Services RFQ No. 12CM14	CCD No. 01	\$0	Sr. Construction Director	6/6/19
TRANSACTIONAL CHANGE ORDERS								
ITEM NO	SCHOOL	REASON FOR CHANGE	NAME OF FIRM	DESCRIPTION OF SERVICES	DOC #	C.O. AMOUNT	APPROVAL REQUIRED	CPSC DATE
15	Castleview ES Site 25-E-SW-4	Estimated ODP for prototype new school relief project.	Charles Perry Construction, Inc.	Agreement No. 17CM07SCONCHARLES for Construction Management Services RFQ No. 17CM07	Change Order No. 04 to GMP AM 01	(\$261,120)	Behalf of John T. Morris, Chief Facilities Officer	6/27/19
16	Elementary School Site 20-E-SW-4	Estimated ODP for prototype new school relief project.	Core Construction Services of Florida, LLC	Agreement No. 18CM07SCONCORE for Construction Management Services RFQ No. 18CM07	Change Order No. 01 to GMP AM 01	(\$4,966,671)	John T. Morris, Chief Facilities Officer	6/27/19
17	Oakshire ES & Pinewood ES	Estimated ODP for existing central energy plant and HVAC components replacement capital renewal project.	Johnson-Laux Construction, LLC	Agreement No. 17CM03SCONJOHNSON for Construction Management Services RFQ No. 17CM03	Change Order No. 01 to GMP AM 03	(\$345,551)	John T. Morris, Chief Facilities Officer	6/13/19
18	Olympia HS	Additional estimated ODP for capital renewal project.	Gilbane Building Company	Agreement No. 14CM16SCON001GILBANE for Construction Management Services RFQ No. 14CM16	Change Order No. 02 to GMP AM 03	(\$275,000)	John T. Morris, Chief Facilities Officer	6/27/19
19	Pershing School 208-K8- SE-3	Additional ODP for prototype new school replacement project.	Williams Company Building Division, Inc.	Agreement No. 16CM27SCONWILLIAMS for Construction Management Services RFQ No. 16CM27	Change Order No. 06 to GMP AM 02	(\$380,000)	Behalf of John T. Morris, Chief Facilities Officer	6/27/19
20	Various Schools Rubberized Track Program	Estimated ODP for rubberized surfacing at 17 high school athletic field tracks, district capital project.	Wharton-Smith, Inc.	Agreement No. 18CM20SCONWHARTON for Construction Management Services RFQ No. 18CM20	Change Order No. 01 to GMP AM 01	(\$422,426)	John T. Morris, Chief Facilities Officer	6/13/19

*** Not Funded by Sales Tax or Capital Renewal**

Facilities & Construction Contracting

COVE Report for July 2019

CONTRACTS AMENDED							
ITEM NO	SCHOOL	REASON FOR CHANGE	NAME OF FIRM	DESCRIPTION OF SERVICES	AMENDMENT	APPROVAL REQUIRED	CPSC DATE
1	Boone HS	Additional services for limited pre-renovation surveying to support new distributed antenna systems project for upgrade and replacement of expired systems capital renewal project.	EE&G Environmental Services, LLC	Amendment No. 06 to Work Authorization No. 1209141 for Environmental Consulting Services RFQ No. 1209PS	\$1,374	Sr. Construction Director	7/11/19
2	Boone HS	Investigation of water intrusion for existing clerestory above wrestling room, training room and classroom for upgrade and replacement of expired systems, capital renewal project.	Terracon Consultants, Inc.	Amendment No. 01 to Work Authorization No. 1307029 for Building Envelope Consultant Services RFQ No. 1307PS	\$6,410	Sr. Construction Director	7/25/19
3	Corner Lake MS	Staffing schedule modification due to two- way radio communication enhancement system for comprehensive project.	C. T. Hsu & Associates, P.A.	Amendment No. 01 to Agreement No. 1613SCONCTHSU for Architectural & Engineering Services RFQ No. 1613PS	\$0	Sr. Construction Director	7/18/19
4	District-Wide	Ninety (90) days time extension for subconsultant, Jacobs Project Management Company, through March 31, 2019 for Program management contract.	Cost Management, Inc. d/b/a CMI	Amendment No. 23 to Agreement No. 15PM21CONCMI for Program Management Support Services RFQ No. 15PM21	\$0	John T. Morris, Chief Facilities Officer	7/18/19
5	District-Wide	Staffing plan modification to fill vacant position to support project during 01/01/2019 through 12/31/2019 for program management contract.	Cost Management, Inc. d/b/a CMI	Amendment No. 22 to Agreement No. 15PM21CONCMI for Program Management Support Services RFQ No. 15PM21	\$0	Sr. Facilities Executive Director	7/11/19

Facilities & Construction Contracting

COVE Report for July 2019

CONTRACTS AMENDED							
ITEM NO	SCHOOL	REASON FOR CHANGE	NAME OF FIRM	DESCRIPTION OF SERVICES	AMENDMENT	APPROVAL REQUIRED	CPSC DATE
6	High School Site 80-H-SW-4	To increase the Architect reimbursable line item amount in contract to ensure adequate coverage for permitting fees, and other unforeseen issues that may arise for prototype new school relief project.	Schenkel & Shultz, Inc.	Design Change Directive No. 02 to Agreement No. 18RU22SCONSCHENKEL for Architectural & Engineering Services RFQ No. 18RU22	\$20,000	Sr. Facilities Executive Director	7/18/19
7	High School Site 113-H-W-4	Additional services for design acceleration to allow for the release of an early site package to deliver in 2021 school year for prototype new school relief project.	Schenkel & Shultz, Inc.	Amendment No. 02 to Agreement No. 18RU23SCONSCHENKEL for Architectural & Engineering Services RFQ No. 18RU23	\$36,156	John T. Morris, Chief Facilities Officer	7/11/19
8	High School Site 113-H-W-4	Increase of architect reimbursable amount to fulfill the requirements of managing permitting fees with the different agencies and any unforeseen issues for prototype new school relief project.	Schenkel & Shultz, Inc.	Design Change Directive No. 02 to Agreement No. 18RU23SCONSCHENKEL for Architectural & Engineering Services RFQ No. 18RU23	\$20,000	Sr. Facilities Executive Director	7/25/19
9	Meadow Woods MS	Staffing schedule modification for two-way radio communication enhancement system for comprehensive project.	C. T. Hsu & Associates, P.A.	Amendment No. 01 to Agreement No. 1811SCONCTHSU for Architectural & Engineering Services RFQ No. 1811PS	\$0	Sr. Construction Director	7/11/19
10	Southwest MS	Staffing schedule modification for two-way radio communication enhancement system for comprehensive project.	C. T. Hsu & Associates, P.A.	Amendment No. 01 to Agreement No. 1710SCONCTHSU for Architectural & Engineering Services RFQ No. 1710PS	\$0	Sr. Construction Director	7/11/19

Facilities & Construction Contracting

COVE Report for July 2019

CONTRACTS AMENDED							
ITEM NO	SCHOOL	REASON FOR CHANGE	NAME OF FIRM	DESCRIPTION OF SERVICES	AMENDMENT	APPROVAL REQUIRED	CPSC DATE
11	Timber Creek HS	Additional design services for a new press-box, all required utilities for newly designed grandstand and 60 days time extension. (Est. Constr. Cost \$390,000.00)	AVCON, Inc.	Amendment No. 01 to Work Authorization No. 1306027 for Structural Engineering Services RFQ No. 1306PS	\$2,812	Sr. Facilities Manager, District Wide/Portable Operations	7/25/19
12	Windermere HS Radio Enhancement	Additional design services for code compliant implementation of radio enhancement distributed antenna system for life safety project. (Est. Constr. Cost \$950,000.00)	Matern Professional Engineering, Inc.	Amendment No. 01 to Work Authorization No. 1514028 for Mechanical, Electrical & Plumbing Engineering Services RFQ No. 1514PS	\$13,119	Sr. Construction Director	7/18/19

* Not Funded by Sales Tax or Capital Renewal

Facilities & Construction Contracting

COVE Report for July 2019

CHANGE ORDERS APPROVED								
ITEM NO	SCHOOL	REASON FOR CHANGE	NAME OF FIRM	DESCRIPTION OF SERVICES	DOC #	C.O. AMOUNT	APPROVAL REQUIRED	CPSC DATE
1	Castlevew ES 25-E-SW-4	Reconciliation of CCD 2 (\$47,336.34) to install tot lot structure, covered play fans and electric water cooler for new school relief project.	Charles Perry Construction, Inc.	Agreement No. 17CM07SCONCHARLES for Construction Management Services RFQ No. 17CM07	Change Order No. 05 to GMP AM 01	\$47,336	John T. Morris, Chief Facilities Officer	7/25/19
2	Colonial HS	Reconciliation of CCD 01 (\$4,914.88) to reroute the chilled water lines for auditorium on-site replacement project.	Gilbane Building Company	Agreement No. 17CM18SCONGILBANE for Construction Management Services RFQ No. 17CM18	Change Order No. 02 to GMP AM 02	\$4,915	Sr. Construction Director	7/25/19
3	Corner Lake MS	Installation and related cost for athletic lockers per design guidelines for comprehensive project.	Wharton-Smith, Inc.	Agreement No. 16CM14SCONWHARTON for Construction Management Services RFQ No. 16CM14	Change Order No. 05 to GMP AM 01	\$35,977	Behalf of John T. Morris, Chief Facilities Officer	7/25/19
4	Corner Lake MS	Gymnasium floor refinishing excluded in the initial renovation for comprehensive project.	Wharton-Smith, Inc.	Agreement No. 16CM14SCONWHARTON for Construction Management Services RFQ No. 16CM14	Change Order No. 02 to GMP AM 01	\$23,265	Sr. Construction Director	7/25/19
5	Facilities Building 100B	Forty-three (43) days time extension due to shipping delays of material for HVAC system replacement/upgrade district capital project.	Clancy & Theys Construction Co.	Agreement No. 12CM14067B for Construction Management Services RFQ No. 12CM14	Change Order No. 02	\$0	Sr. Facilities Director, Maintenance	7/25/19
6	Lake Gem ES	Drywall texture and prime coating in existing buildings 1 through 6 due to finishing's applied not per the design guidelines for comprehensive project.	Wharton-Smith, Inc.	Agreement No. 17CM04SCONWHARTON for Construction Management Services RFQ No. 17CM04	Change Order No. 02 to GMP AM 01	\$44,030	John T. Morris, Chief Facilities Officer	7/18/19
7	Union Park ES	Forty-seven (47) days total time extension to Phase 1B - school south side new building (41-days) and Phase 2 - building 17 remaining renovation (6-days) for comprehensive project.	James B. Pirtle Construction Company, Inc. d/b/a Pirtle Construction Company	Agreement No. 16CM10SCONPIRTLE for Construction Management Services RFQ No. 16CM10	Change Order No. 05 to GMP AM 01	\$0	Sr. Facilities Executive Director	7/25/19

Facilities & Construction Contracting

COVE Report for July 2019

TRANSACTIONAL CHANGE ORDERS								
ITEM NO	SCHOOL	REASON FOR CHANGE	NAME OF FIRM	DESCRIPTION OF SERVICES	DOC #	C.O. AMOUNT	APPROVAL REQUIRED	CPSC DATE
8	Pinar ES	Estimated ODP for on-site replacement project.	R. L. Burns, Inc.	Agreement No. 18CM10SCONRLBURNS for Construction Management Services RFQ No. 18CM10	Change Order No. 01 to GMP AM 01	(\$4,083,297)	John T. Morris, Chief Facilities Officer	7/11/19
9	Rolling Hills ES	Estimated ODP for new school comprehensive/replacement project.	James B. Pirtle Construction Company, Inc. d/b/a Pirtle Construction Company	Agreement No. 18CM06SCONPIRTLE for Construction Management Services RFQ No. 18CM06	Change Order No. 01 to GMP AM 01	(\$3,997,022)	John T. Morris, Chief Facilities Officer	7/11/19

*Not Funded by Sales Tax or Capital Renewal

OCPS FACILITIES & CONSTRUCTION CONTRACTING
RFQs in Progress: APRIL 2019

No.	Contract Description	Pre Submittal Meeting	Open Date	Shortlist Meeting	Interview Meeting	Board / CFO Date	Construction Cost	Status
RFQ 19CM04	CM Services for Orange Technical College-Orlando Campus Comprehensive Project	3/12/2019	4/2/2019	4/11/2019	4/23/2019	5/14/2019	\$20,160,000.00	On-Going
RFQ 19CM05	CM Services for Orange Technical College-Westside Campus Replacement Project	3/26/2019	4/16/2019	4/30/2019	5/14/2019	5/28/2019	\$27,000,000.00	On-Going
RFQ 1906PS	A/E Services for Orange Technical College-Orlando Campus Comprehensive Project	4/9/2019	4/30/2019	5/7/2019	5/21/2019	6/11/2019	\$18,000,000.00	On-Going
RFQ 1907PS	A/E Services for Magic Way Master Plan Project	4/17/2019	5/7/2019	5/17/2019	6/6/2019	6/25/2019	\$750,000.00	On-Going

OCPS FACILITIES & CONSTRUCTION CONTRACTING
RFQs in Progress: MAY 2019

No.	Contract Description	Pre Submittal Meeting	Open Date	Shortlist Meeting	Interview Meeting	Board / CFO Date	Construction Cost	Status
RFQ 19CM04	CM Services for Orange Technical College-Orlando Campus Comprehensive Project	3/12/2019	4/2/2019	4/11/2019	4/23/2019	5/14/2019	\$20,160,000.00	On-Going
RFQ 19CM05	CM Services for Orange Technical College-Westside Campus Replacement Project	3/26/2019	4/16/2019	4/30/2019	5/14/2019	5/28/2019	\$27,000,000.00	On-Going
RFQ 1906PS	A/E Services for Orange Technical College-Orlando Campus Comprehensive Project	4/9/2019	4/30/2019	5/7/2019	5/21/2019	6/11/2019	\$18,000,000.00	On-Going
RFQ 1907PS	A/E Services for Magic Way Master Plan Project	4/17/2019	5/7/2019	5/17/2019	6/6/2019	6/25/2019	\$750,000.00	On-Going

OCPS FACILITIES & CONSTRUCTION CONTRACTING
RFQs in Progress: JUNE 2019

No.	Contract Description	Pre Submittal Meeting	Open Date	Shortlist Meeting	Interview Meeting	Board / CFO Date	Construction Cost	Status
RFQ 1906PS	A/E Services for Orange Technical College-Orlando Campus Comprehensive Project	4/9/2019	4/30/2019	5/7/2019	5/21/2019	6/11/2019	\$18,000,000.00	On-Going
RFQ 1907PS	A/E Services for Magic Way Master Plan Project	4/17/2019	5/7/2019	5/17/2019	6/6/2019	6/25/2019	\$750,000.00	On-Going

OCPS FACILITIES & CONSTRUCTION CONTRACTING
RFQs in Progress: JULY 2019

No.	Contract Description	Pre Submittal Meeting	Open Date	Shortlist Meeting	Interview Meeting	Board / CFO Date	Construction Cost	Status
RFQ 1906PS	A/E Services for Orange Technical College-Orlando Campus Comprehensive Project	4/9/2019	4/30/2019	5/7/2019	5/21/2019	6/11/2019	\$18,000,000.00	On-Going
RFQ 1907PS	A/E Services for Magic Way Master Plan Project	4/17/2019	5/7/2019	5/17/2019	6/6/2019	6/25/2019	\$750,000.00	On-Going
RFQ 19CM08	CM Services for Ronald Blocker ELC HVAC System Renovation Project	6/11/2019	6/20/2019	7/9/2019	7/23/2019	8/20/2019	\$2,215,000.00	On-Going

Plan Year(s) Filter: FY13 - FY20
Inventory Group Filter: G3,G4,G5,G6

Location	Age (Wt'd)	Maint. Area	Project Number	Size	Gp	Project Elements													Budget / Committed			Project Cost / Construction Cost				Construction Schedule												
						Site	Roofing	Structural	Exterior	Interior	Mechanical	Electrical	Plumbing	Life Safety	Technology	Conveyance	Specialties	Required Budget	Assigned to Date	Balance Uncommitted	Estimate Total Cost	Construction Amount	Change Orders	ODP	NTP	Substantial Completion	Closed (Forecast)	Days Past Subst. Compl. (close-out)										
																			FY13 - FY20			FY13 - FY21	Base	Amount	#	Deducts	#											
CONSTRUCTION PHASE																																						
Apopka HS	11-Yr	NW	N0143.14	Int	G5																					488,504	444,095	44,409	488,504	444,095	-	-	-	-	04/18/19A	10/10/19		
Castle Creek ES	13-Yr	NE	N0143.10	Sm	G4																					275,000	248,363	26,637	275,000	247,453	-	-	-	-	05/14/19A	09/27/19		
Catalina ES	12-Yr	SS	N0143.19	Sm	G4																					284,827	271,264	13,563	284,827	271,264	-	-	-	-	05/30/19A	09/26/19		
Citrus ES	20-Yr	NW	N0057.1	Int	G3																					385,000	55,034	329,966	385,000	350,000	-	-	-	-	07/15/19A	12/04/19		
Colonial HS	18-Yr	NE	N0035.0	Lg	G3																					5,754,000	4,929,057	824,943	5,754,000	4,126,473	-	-	(956,891)	1	02/11/19A	12/20/19		
Edgewater HS	9-Yr	NE	N0143.21	Int	G5																					576,000	470,865	105,135	576,000	480,000	-	-	-	-	06/11/19A	10/08/19		
Gotha MS	25-Yr	NW	N0032.0	Lg	G5																					10,888,000	8,739,066	2,148,934	10,888,000	8,495,843	-	-	(1,420,776)	1	03/18/19A	05/18/20		
Lawton Chiles ES	20-Yr	NE	N0060.0	Int	G3																					1,899,000	1,670,529	228,470	1,899,000	1,472,031	-	-	(193,866)	2	04/23/19A	09/20/19		
Northlake Park ES	20-Yr	SS	N0078.0	Int	G3																					1,361,000	1,176,230	184,770	1,361,000	1,109,804	-	-	(134,873)	1	04/10/19A	12/30/19		
Oakshire ES	20-Yr	SS	N0094.0	Lg	G3																					7,119,000	6,640,869	478,132	7,119,000	6,089,530	27,202	1	(614,504)	3	05/28/19A	09/18/20		
Ocoee MS	20-Yr	NW	N0026.0	Int	G3																					1,865,000	174,444	1,690,556	1,865,000	1,085,000	-	-	-	-	07/22/19A	12/20/19		
Ocoee MS	20-Yr	NW	N0026.1	Lg	G3																					5,115,999	4,463,580	652,419	5,115,999	4,019,174	-	-	(634,444)	1	04/11/19A	12/16/19		
Odyssey MS	19-Yr	NE	N0067.0	Lg	G3																					5,521,000	4,152,735	1,368,265	5,521,000	3,657,577	-	-	(457,556)	1	02/04/19A	11/27/19		
Olympia HS	19-Yr	NW	N0033.2	Lg	G3																					16,575,000	15,014,919	1,560,082	16,575,000	13,232,879	-	-	(2,419,835)	2	12/12/18A	02/11/20		
Pinewood ES	22-Yr	NW	N0095.0	Lg	G5																					7,023,000	6,656,391	366,609	7,023,000	6,053,620	48,650	1	(580,061)	3	05/28/19A	09/18/20		
Riverdale ES	21-Yr	NE	N0143.13	Sm	G5																					300,000	279,756	20,245	300,000	280,000	-	-	-	-	05/14/19A	09/23/19		
Southwood ES	22-Yr	SS	N0065.0	Int	G5																					833,000	602,990	230,010	833,000	456,373	-	-	(95,000)	1	04/09/19A	10/18/19		
Timber Creek HS	20-Yr	NE	N0037.2	Lg	G3																					16,958,000	16,585,520	372,481	16,958,000	13,982,080	49,995	2	(2,735,850)	2	07/05/18A	09/13/19		
Timber Creek HS	20-Yr	NE	N0143.15	Sm	G3																					275,000	163,611	111,389	275,000	250,000	-	-	-	-	04/26/19A	09/22/19		
Union Park MS	13-Yr	NE	N0143.18	Int	G5																					420,000	344,263	75,737	420,000	350,000	-	-	-	-	06/11/19A	10/08/19		
Wekiva HS	12-Yr	NW	N0143.20	Int	G4																					413,403	393,717	19,686	413,403	393,717	-	-	-	-	03/02/16A	12/13/19		
Winter Park HS	14-Yr	NE	N0098.0	Int	G3																					500,001	454,472	45,529	500,001	427,671	-	-	-	-	03/28/19A	09/20/19		
SUBTOTAL - CONSTRUCTION	22 Projects		22 Sites																							84,829,735	73,931,769	10,897,966	84,829,735	67,274,584	125,848	4	(10,243,656)	18				
CLOSE-OUT																																						
Blankner K8	18-Yr	NE	N0023.0	Lg	G4																					6,250,000	6,197,393	52,607	6,250,000	5,449,595	(552,209)	2	(1,207,951)	2	03/28/18A	08/02/19A	11/30/19	
Bridgewater MS	12-Yr	NW	N0143.17	Int	G4																					420,000	333,075	86,925	420,000	350,000	-	-	-	-	04/18/19A	08/09/19A	10/08/19	
Boone HS	24-Yr	NE	N0031.0	Lg	G3																					25,001,000	21,235,603	3,765,397	25,001,000	17,189,003	220,065	2	(1,979,776)	3	02/12/18A	08/02/19A	11/30/19	
Chain of Lakes MS	21-Yr	NW	N0076.0	Int	G3																					1,761,000	1,676,219	84,781	1,761,000	1,501,038	12,335	1	(163,083)	1	03/07/18A	12/12/18A	10/07/19	
Citrus ES	20-Yr	NW	N0057.0	Int	G3																					1,715,000	1,631,545	83,456	1,715,000	1,104,954	-	-	(119,066)	2	04/19/18A	08/13/18A	10/07/19	
Citrus ES	20-Yr	NW	N0057.2	Sm	G3																					496,000	314,325	181,675	496,000	-	-	-	-	01/10/19A	01/25/19A	09/27/19		
College Park MS	11-Yr	NE	N0075.0	Int	G5																					1,654,000	1,544,046	109,953	1,654,000	1,516,475	(85,701)	1	(322,800)	1	01/18/18A	08/07/18A	10/07/19	
Colonial HS	18-Yr	NE	N0035.1	Int	G3																					1,998,000	1,855,356	142,644	1,998,000	1,568,497	233,110	2	(234,253)	2	03/20/18A	02/08/19A	10/07/19	
Columbia ES	12-Yr	NE	N0143.11	Sm	G4																					275,000	253,496	21,504	275,000	252,586	-	-	-	-	03/20/19A	08/01/19A	09/30/19	
Jackson MS	16-Yr	NE	N0077.0	Int	G4																					1,476,000	1,318,465	157,535	1,476,000	1,087,070	-	-	(34,336)	2	10/03/17A	01/29/18A	10/07/19	
Jones HS	15-Yr	SS	D0103.1	Lg	G3																					3,014,000	2,845,916	168,084	3,014,000	2,532,775	244,901	3	-	-	05/24/16A	08/14/17A	10/10/19	
Lakeview MS	24-Yr	NW	N0041.2	Int	G3																					963,000	850,757	112,244	963,000	718,185	-	-	(37,770)	1	05/19/17A	10/11/17A	10/07/19	
Liberty MS	14-Yr	NE	N0022.0	Lg	G4																					9,055,000	8,420,635	634,365	9,055,000	7,401,231	172,749	8	(1,263,495)	2	02/09/16A	02/19/18A	10/07/19	
OTC-Avalon Campus	11-Yr	NE	N0143.1	Sm	G4																					184,000	168,315	15,685	184,000	167,437	-	-	-	-	01/28/19A	07/15/19A	09/13/19	
Odyssey MS	19-Yr	NE	N0067.1	Int	G3																					2,181,000	1,997,481	183,519	2,181,000	1,965,969	-	-	(703,648)	1	06/06/17A	11/30/17A	10/07/19	
Stone Lakes ES	13-Yr	NE	N0143.6	Sm	G4																					275,000	249,917	25,083	275,000	249,007	-	-	-	-	03/20/19A	08/09/19A	10/08/19	
West Oaks ES	15-Yr	NW	N0143.7	Sm	G4																					275,000	261,447	13,553	275,000	260,399	-	-	-	-	03/20/19A	08/09/19A	10/08/19	
Windermere ES	13-Yr	NW	N0143.8	Sm	G4																					281,500	263,046	18,454	281,500	261,998	-	-	-	-	04/16/19A	07/31/19A	09/29/19	
Winter Park HS	14-Yr	NE	N0066.2	Int	G3																					1,628,000	1,501,131	126,869	1,628,000	1,220,671	-	-	-	-	06/30/17A	08/11/17A	10/07/19	
Wolf Lake ES	13-Yr	NW	N0085.0	Int	G4																					1,104,000	984,961	119,038	1,104,000	881,746	-	-	(203,095)	2	12/06/17A	05/02/18A	10/07/19	
SUBTOTAL - CLOSE-OUT	20 Projects		20 Sites																							60,006,499	53,903,130	6,103,370	60,006,499	45,678,635	245,251 </							

Capital Renewal Update – September 19, 2019

There are 44 active projects (20 large, 18 intermediate, 6 small) currently in progress for improvements at 40 sites, with an estimated total cost of \$171.6M and construction cost of \$132.9M. This is a significant reduction in the cost and number of active projects as a result of the completion of several projects since our last report.

There are 11 projects currently being planned, which is a decrease of one since the last report. A large project addressing similar building envelope and heating, ventilating and air conditioning (HVAC) requirements at Lakeville and Riverdale Elementary Schools moved to the design phase. A new small roof replacement requirement at Windy Ridge K8 was combined with existing roof replacement projects at Lakeview and College Park Middle Schools into a single multi-site intermediate project, currently in the planning phase. And, the West Oaks Elementary School Gutter Replacement project, previously reported in construction has reverted to planning due to the termination of the previous construction contract.

Design commencement is imminent for a project addressing heating, ventilating and air conditioning (HVAC) improvements project at Wolf Lake Middle School, currently in the planning phase. Scope development continues on the remaining projects in planning.

11 projects are currently in the design phase, which is also a decrease of one since the last report. As noted previously, design recently commenced on the building envelope and HVAC requirements at Lakeville and Riverdale Elementary Schools, while the College Park Middle School Building 3 roof replacement reverted to planning as part of the multi-site roofing project. Intermediate projects addressing building envelope and intercom system requirements at Citrus Elementary School, and low voltage requirements and a lift station replacement at Ocoee Middle School commenced construction since the last report.

We are currently negotiating Guaranteed Maximum Price (GMP) agreements on a roof and rooftop HVAC equipment replacement project at Acceleration East and a campus-wide project at Jones High School and anticipate construction commencement in October. Bidding has also commenced on softball field drainage renovations at Boone High School and HVAC improvements at Freedom High School, and bidding will commence soon on a campus-wide project at Discovery Middle School. Construction on all of these projects will commence prior to the end of the year.

Design work continues on campus-wide requirements at Colonial 9th Grade Center, Ridgewood Park Elementary School paving requirements, and HVAC and building envelope requirements at Bonneville Elementary School. Construction commencement for these projects and the previously mentioned Lakeville and Riverdale Elementary Schools building envelope and HVAC projects is scheduled for 2020.

22 projects are currently under construction, which is a decrease of seven since the last report. Since the last report, five small or intermediate chiller replacements and an intermediate chiller renewal were completed. An intermediate HVAC project at Freedom High School, a large multi-system project at Blankner K8 and a large campus-wide project at Boone High School also achieved substantial completion.

In addition to the previously mentioned projects at Citrus Elementary School and Ocoee Middle School, new intermediate projects providing for chiller renewal at Edgewater High School and chiller replacement at Union Park Middle School also commenced construction.

The 22 projects under construction include 8 large, 10 intermediate and 4 small projects, with an estimated total cost of \$84.8M and construction cost of \$67.3M. These include two campus-wide high school projects at Olympia and Timber Creek High Schools that exceed \$10M in construction costs.

Except for projects at Olympia High School, Gotha Middle School, and Oakshire and Pinewood Elementary Schools which are scheduled for completion early in 2020, all projects currently under construction will be completed later in 2019.

The large and intermediate projects scheduled to commence later in 2019 represent an additional \$21.6M of anticipated construction contract awards for calendar year 2019. The detailed report highlights a decrease in the forecasted balance of unused capital renewal funds through the end of FY 2020, with \$63.6M available for new requirements. This amount reflects an adjustment in the previously planned budget allocation for FY 2020 to better align with expected execution.

Capital Renewal Update as of September 19, 2019

Changes since 6/20/19

Planning

- New Project
 - o Multiple Sites - N0097.0 Roofing at 3 Sites
- Combined with other projects
 - o Lakeview MS – N0097.0 Roof Replacement
 - o College Park MS – N0075.1 Bldg. 3 Roof Replacement (from Design)
- Moved to Design
 - o Lakeville ES – N0068.0 HVAC
 - o Riverdale ES – N0064.0 HVAC, Env.
- Moved from Construction
 - o West Oaks ES – N0143.16 Gutter Replacement

Design

- Moved from Planning
 - o Lakeville ES – N0068.0 HVAC
 - o Riverdale ES – N0064.0 HVAC, Env.
- Moved to Planning
 - o College Park MS – N0075.1 Bldg. 3 Roof Replacement
- Moved to Construction
 - o Citrus ES – N0057.1 Bldg. Envelope/Intercom System
 - o Ocoee MS – N0026.0 FA, Int., Security, Lift Station

Construction

- New Project
 - o Edgewater HS – N0143.21 Chiller Renewal
 - o Union Park MS – N0143.18 Chiller Replacement
- Moved to Planning
 - o West Oaks ES – N0143.16 Gutter Replacement
- Moved from Design
 - o Citrus ES – N0057.1 Bldg. Envelope/Intercom System
 - o Ocoee ES – N0026.0 FA, Int., Security, Lift Station

Capital Renewal Update as of September 19, 2019

Changes since 6/20/19

Construction (continued)

- Moved to Close-out
 - o Blankner K8 – N0023.0 Roof, HVAC, Env., Ext. Lighting, Security
 - o Boone HS – N0031.0 Campus Wide
 - o Bridgewater MS – N0143.17 Chiller Renewals
 - o Columbia ES – N0143.11 Chiller Replacement
 - o OTC Avalon Campus – N0143.1 Chiller Replacement
 - o Stone Lake ES – N0143.6 Chiller Replacement
 - o West Oaks ES – N0143.7 Chiller Replacement
 - o Windermere HS – N0143.8 Chiller Replacement

- Moved to Complete
 - o Esteem Academy (AE) – N0143.12 Gutter Replacement
 - o Freedom HS – N0143.5 Bldg. 900 HVAC

Close-out

- Moved from Construction
 - o Blankner K8 – N0023.0 Roof, HVAC, Env., Ext. Lighting, Security
 - o Boone HS – N0031.0 Campus Wide
 - o Bridgewater MS – N0143.17 Chiller Renewals
 - o Columbia ES – N0143.11 Chiller Replacement
 - o OTC Avalon Campus – N0143.1 Chiller Replacement
 - o Stone Lake ES – N0143.6 Chiller Replacement
 - o West Oaks ES – N0143.7 Chiller Replacement
 - o Windermere HS – N0143.8 Chiller Replacement

- Moved to Complete
 - o Lake Nona HS – N0143.2 Chiller #1 Renewal
 - o Lake Nona HS – N0143.3 Chiller #2 Renewal
 - o Lawton Chiles – N0060.1 Digital Curriculum (Cohort 7)
 - o Oakshire ES – N0061.1 Digital Curriculum (Cohort 7)
 - o Ridgewood Park ES – N0063.2 Digital Curriculum (Cohort 7)
 - o Riverdale ES – N0064.1 Digital Curriculum (Cohort 7)
 - o Southwood ES – N0065.1 Digital Curriculum (Cohort 7)

Complete

- Moved from Construction
 - o Esteem Academy (AE) – N0143.12 Gutter Replacement
 - o Freedom HS – N0143.5 Bldg. 900 HVAC

- Moved from Close-out
 - o Lake Nona HS – N0143.2 Chiller #1 Renewal
 - o Lake Nona HS – N0143.3 Chiller #2 Renewal
 - o Lawton Chiles – N0060.1 Digital Curriculum (Cohort 7)
 - o Oakshire ES – N0061.1 Digital Curriculum (Cohort 7)
 - o Ridgewood Park ES – N0063.2 Digital Curriculum (Cohort 7)
 - o Riverdale ES – N0064.1 Digital Curriculum (Cohort 7)
 - o Southwood ES – N0065.1 Digital Curriculum (Cohort 7)

Capital Renewal Update as of September 19, 2019

Capital Renewal: Capital Renewal is the replacement of major systems and components needed to preserve the efficient operation of school facilities. Capital Renewal funds are intended for Groups G3, G4, G5, and G6 school facilities, and Project Elements greater than \$50,000 in Priorities P1, P2, and P3 (and incidental P4 or P5 Elements).

Project Elements

Site	Exterior	Electrical	Technology
Roofing	Interior	Plumbing	Conveyances
Structural	Mechanical	Life Safety	Specialties

Maintenance Areas

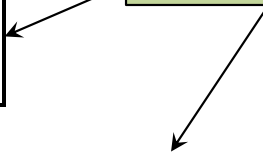
NE - Northeast Maintenance Area
 NW - Northwest Maintenance Area
 SS - Super South Maintenance Area

Facilities Inventory - Group Structure

G1 - balance of 2003 Sales Tax List, funded through FY16
 G2 - balance of 2003 Sales Tax List, funded FY17 - FY22

G3 - pre-2003 Sales Tax facilities; funded FY23 - FY26
 G4 - facilities constructed or renovated 2003 to 2008
 G5 - facilities constructed or renovated 2008 to 2013
 G6 - facilities constructed or renovated 2013 to 2018

Eligible for CR funding



Funding Priorities

Priority P1: Life Safety, Roofing, Air Conditioning, Security
 Priority P2: Exterior Doors/Windows, Elevators, Plumbing, Electrical Power, Technology, Perimeter Fencing / Gates, Interior Lighting
 Priority P3: Interior Partitions / Doors / Windows, Ceilings, Exterior Lighting, Exterior Finishes, Voice Communications, Paving (Roads, Walks, Parking)

Priority P4: Interior Specialties, Playground Equipment
 Priority P5: Interior Finishes, Landscaping, Athletic Facilities

Abbreviations

9GC - 9th Grade Center; Grade 9	K - Thousands (number); Kindergarten (school)
A - Actual (related to a date)	K8 - Grades K - 8
Age (Wt'd) - weighted age of a campus	Lg - Large CR Project; over \$2M
Alt Ed - Alternative Education	M - Millions
Bldg - Building	Maint. Area - Maintenance Area
CEP-E; Community Education Partners (Alt Ed)	MEP - Mechanical, Electrical and Plumbing
CEP-W; Community Education Partners (Alt Ed)	MS - Middle School; Grades 6 - 8
CR - Capital Renewal	NTP - Notice to Proceed
Dr H'wre - Door Hardware	ODP - Owner Direct Purchase
Elec - Electrical	R'newal - renewal of chiller
ES - Elementary School; Grades PreK - 5	SC - Substantial Completion
Est. - Estimated	Sm - Small CR Project; under \$280K
FY - Fiscal Year; July 1 through June 30	Subst. Compl. - Substantial Completion
Gp - Group; organization of campus-wide facilities	TBD - To Be Determined
HS - High School; Grades 9 - 12	Tech - Technology
HVAC - Heating, Ventilating and Air Conditioning	VFD - Variable Frequency Drive
Int - Intermediate CR Project; \$280K to \$2M	Yr - Year

Capital Renewal Update as of September 19, 2019

Active Projects With Construction Cost Exceeding \$10M

Timber Creek High School Campus-wide Capital Renewal Project

Guaranteed Maximum Price: \$13,982,080

Building Envelope Renovations

- Complete roof replacement, all buildings
- Roof drain replacement in conjunction with roof replacement
- New lightning protection system
- Wall crack repairs at the Central Energy Plant (CEP)

Heating, Ventilating and Air Conditioning (HVAC) Renovations

- Replacement of all air-handling units (AHUs), campus-wide (47 AHUs)
- Addition of bi-polar ionization to select AHUs in conjunction with AHU replacement
- Replacement of HVAC duct work within mechanical rooms
- Replacement of all rooftop mechanical equipment (exhaust fans, air intakes)
- Variable frequency drive (VFD) replacements for AHUs and pumps
- Replacement of heating hot water piping and valves, campus-wide
- Replacement of cooling towers, condenser and chilled water pumps, boilers, condenser water piping and condenser water treatment at the Central Energy Plant (CEP)
- Replacement of the existing building automation system (BAS), campus-wide
- Rebalancing of all HVAC systems

Low-voltage System Improvements

- Replacement of the campus intercom system
- Replacement of the gymnasium sound system
- Replacement of the cafeteria sound reinforcement system

Safety and Security

- Fire alarm system replacement
- Intrusion detection system replacement
- Security camera system replacement
- Security camera system expansion (alternate funding)

Capital Renewal Update as of September 19, 2019

Active Projects With Construction Cost Exceeding \$10M

Olympia High School Campus-wide Capital Renewal Project

Guaranteed Maximum Price: \$13,232,880

Building Envelope Renovations

- Complete roof replacement (2 buildings) or new roof membrane (8 buildings), campus-wide
- Roof drain repair or replacement in conjunction with roof replacement
- New lightning protection system
- Sealant replacement at all sidewalk to wall transitions
- Sealant replacement at all tilt wall panel joints
- Wall crack and concrete spalling repairs at building 1100 and the cooling tower yard

Heating, Ventilating and Air Conditioning (HVAC) Renovations

- Replacement of all air-handling units (AHUs), campus-wide (49 AHUs)
- Addition of bi-polar ionization to select AHUs in conjunction with AHU replacement
- Replacement of HVAC duct work within mechanical rooms
- Variable frequency drive (VFD) replacements for AHUs and pumps
- Replacement of heating hot water piping and valves, campus-wide
- Replacement of cooling towers, condenser and chilled water pumps, boilers, condenser water piping and condenser water treatment at the Central Energy Plant (CEP)
- Replacement of the existing building automation system (BAS), campus-wide
- Rebalancing of all HVAC systems

Low-voltage System Improvements

- Replacement of the campus intercom system
- Replacement of the gymnasium sound system

Safety and Security

- Fire alarm system replacement
- Security camera system replacement
- Security camera system expansion (alternate funding)

Capital Renewal Forecast

Reporting Period: Aug 2019 - Jul 2021

